



> New Jersey

Advancing women
Advancing transportation

THE JERSEY CONNECTION

APRIL 2026

IN THIS ISSUE

- President's Message
- Event Recaps
- Mentoring Program
- College Outreach
- Upcoming Events
- Call for Abstracts
- Membership Corner
- Agency Affiliate Program
- Corporate Partners
- Advisory Council

How are we Doing?



PRESIDENT'S MESSAGE

Dear WTS New Jersey Community,

As we welcome the arrival of spring, I want to take a moment to thank each of you for your continued support of WTS New Jersey. Your engagement, leadership, and commitment to our mission are what make our organization thrive. I hope the first quarter of the year has been productive, rewarding, and energizing—whether through professional milestones, new connections, or meaningful collaboration. We are grateful to move forward into the rest of the year together and look to all that lies ahead for our members and our transportation community.

We're entering an exciting season filled with programs, technical sessions, and events designed to support your growth and engagement. I encourage you to get involved and take full advantage of all that WTS New Jersey has to offer. One initiative I'm especially excited to share is the official launch of the WTS NJ Agency Affiliate Program—a new partnership that recognizes public agencies that champion our mission while expanding access to WTS NJ programs and strengthening collaboration across the public and private sectors.

The Agency Affiliate Program was developed with the full support of our Board of Directors and valuable input from our Advisory Council, which includes representatives from ten New Jersey public agencies. Together, we designed a program that reflects the importance of partnership, inclusion, and shared leadership in shaping the future of transportation in our state.

Through participation as a WTS NJ Agency Affiliate, agencies will gain meaningful opportunities for engagement, including: WTS NJ memberships, access to technical programs and networking events, agency spotlights and promotion of job postings, and committee involvement with Advisory Council participation.



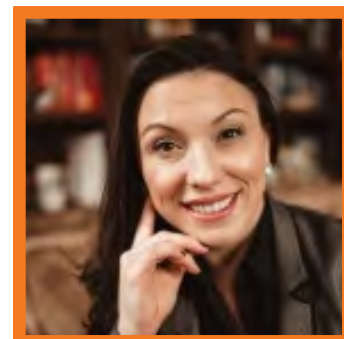
PRESIDENT'S MESSAGE CONTINUED

Most importantly, the program creates a structured and intentional pathway for collaboration—bringing together agency leaders, emerging professionals, and industry partners to address workforce development, leadership, and the future of transportation in New Jersey.

We are proud of our long-standing partnerships with public agencies and look forward to deepening these relationships through the Agency Affiliate Program. We would be honored to welcome your agency for the Spring 2026–Spring 2027 program year and to continue building a more inclusive, innovative, and resilient transportation community together.

Thank you for your continued leadership and commitment to our industry. Additional details and enrollment information can be found in the following pages of this newsletter.

Jacqueline Rooke
President, WTS New Jersey Chapter



EVENT RECAPS

January 2026 - April 2026

- Wednesday, January 21 WTS NJ: Technical Series Program Session #1
- Wednesday, March 18 WTS NJ: Technical Series Program Session #2
- Wednesday, March 18 Executive meeting with NJDOT Acting Commissioner
- Sunday, March 22 WTS NJ Board Retreat
- Wednesday, March 25 Advisory Council - Women's Council International Women's Day Celebration

Technical Series #1: Linear Construction Project Applicability: What types of projects can use the linear construction guidance?

On January 21, 2026, WTS NJ hosted a dynamic 90-minute virtual session focused on the eligibility requirements for linear construction and described the process that is followed from design through construction, to plan for and manage the contaminated materials expected to be encountered during subsurface disturbance/excavation activities. The linear construction guidance was established in 2012 for those entities (transportation agencies, utility companies, etc.) who implement infrastructure improvement/public works projects and are not responsible for the remediation of contaminated sites within or adjacent to the project corridor.

Twenty-one (21) participants attended this session. Thanks to IMEG, this session offered 1 AICP CM credit to attendees.

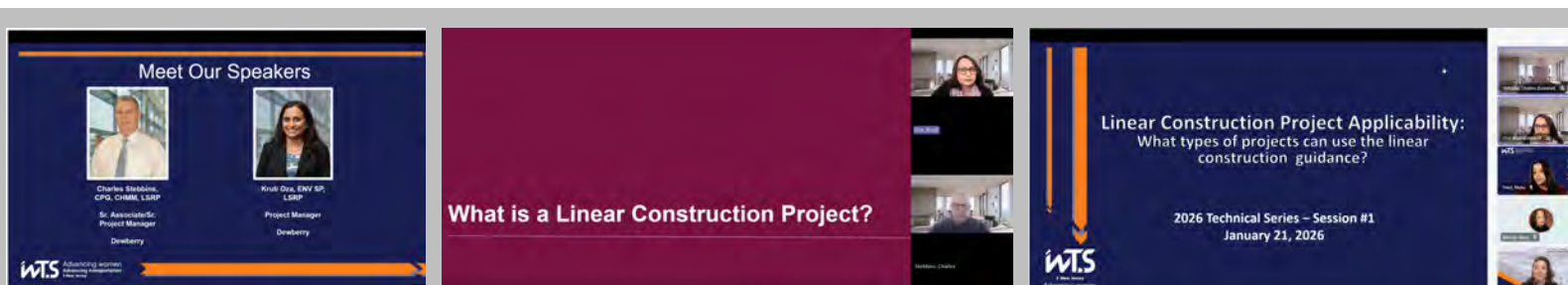
Key Highlights:

- Process of what is involved when unknown discharges are identified during the course of a linear construction project
- Showcased case studies to illustrate the complexity of linear construction projects performed in urbanized and industrial/commercial areas

Speaker(s):

We would like to thank our speakers from Dewberry for providing an insightful and informative presentation!

- Charles Stebbins, CPG, CHMM, LSRP (Sr. Associate/Sr. Project Manager, Dewberry)
- Kruti Oza, ENV SP, LSRP (Project Manager, Dewberry)



The screenshot displays a virtual meeting interface with three main slides and a grid of participant video feeds on the right.

- Slide 1: Meet Our Speakers**
 - Charles Stebbins, CPG, CHMM, LSRP (Sr. Associate/Sr. Project Manager, Dewberry)
 - Kruti Oza, ENV SP, LSRP (Project Manager, Dewberry)
- Slide 2: What is a Linear Construction Project?**
- Slide 3: Linear Construction Project Applicability: What types of projects can use the linear construction guidance?**
 - 2026 Technical Series – Session #1
 - January 21, 2026

WELCOMING NJDOT COMMISSIONER JAIN



Acting Commissioner Priya Jain and the WTS New Jersey Executive Board met on March 18, 2026, to strengthen collaboration and advance shared priorities. The discussion highlighted WTS NJ's mission to advance women in transportation and showcased the chapter's continued growth and impact across membership, partnerships, scholarships, events, leadership, and mentorship. We also explored how WTS NJ supports public agencies through workforce development, knowledge sharing, and succession planning, including the upcoming spring launch of our new Agency Affiliate Program. The meeting concluded with recognition of Commissioner Jain's appointment and a look ahead to future opportunities for collaboration between NJDOT and WTS New Jersey.



Click [here](#) for Additional Photos

WTS NJ Board Leadership Retreat

The WTS New Jersey Board of Directors and Committee Chairs convened for the 2026 Chapter Retreat on March 22 at the Chauncey Hotel and Conference Center for a full day of collaboration, reflection, and forward-looking planning. The retreat provided an opportunity to celebrate the chapter's strong foundation—including growing membership, healthy financials, impactful programming, and continued Gold Chapter status—while grounding the Board in WTS NJ's mission, governance, and strategic priorities. Through interactive discussions and high-level visioning exercises, board members reviewed chapter operations, assessed strengths and opportunities, and identified areas for growth to ensure the organization remains resilient, inclusive, and member-focused.

A key focus of the retreat was action planning across all committees, with clear goals established for membership growth, mentoring, programs, corporate partnerships, agency engagement, communications, college outreach, and Transportation YOU initiatives. Board members worked collaboratively to align priorities, strengthen succession planning, expand partnerships across public and private sectors, and enhance professional development and technical offerings. The day concluded with a fellowship lunch and a shared commitment to advancing women in transportation through leadership, meaningful collaboration, and dynamic programming—setting a strong course for the year ahead and reaffirming WTS New Jersey's role as a leader in the state's transportation community.



PANYNJ International Women's Day

The Port Authority of New York and New Jersey's (PANYNJ) Employee Resource Business Group hosted their 5th Annual Women's Council's International Women's Day on March 25, 2026, at New Jersey City University's Business School. This year's theme for PANYNJ's signature event was "Give to Gain," which focuses on fostering gender equality through intentional generosity, collaboration, and shared action that results in collective prosperity, strengthened communities, and accelerated progress for all.

Executive Director Kathryn Garcia was the keynote speaker kicking off the day's festivities. As the first female Executive Director in the agency's history, she remarked on the significance of being supported as a bi-state agency by female governors in both states. The panel discussion featured Jacqueline Rooke (WTS NJ President), Erica Swansen (WTS GNY President), Danielle LaFrance (Deputy Chief, Project Management, NJ Transit), and Mersida Ibric (Chief People Officer, MTA) and was moderated by Kim Payne (Manager, PANYNJ). The panelists had a very engaging and insightful discussion about mentoring, ways to foster equality, internal and external networking, and encouragement for getting outside one's comfort zone to elevate their career.

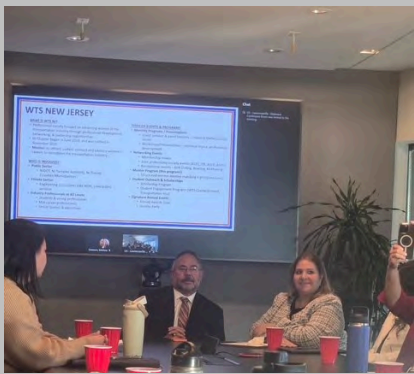
Clarelle DeGraffe, Director and General Manager of PATH, invited WTS NJ and WTS GNY to the event. Kyrra Hana Mosley, WTS NJ Vice President, and Ece Koch, WTS GNY Past President, provided an overview of WTS, the benefits of joining, and upcoming events. Both chapters had tables at the event with Tam Sillick (Advisory Council Vice Chair) and Jeepsi Patel (Advisory Council member) representing WTS NJ. There was overwhelming enthusiasm to join, attend events, and volunteer on committees.

We would like to extend a heartfelt welcome to PANYNJ for becoming our first public agency to partner with our chapter, and we look forward to the many collaborations in the years to come.



**PORT
AUTHORITY
NY NJ**
AIR LAND RAIL SEA

MENTORING PROGRAM



The WTS New Jersey Mentoring Program is officially underway following the successful completion of our annual speed-matching event, held on Wednesday, April 8, at WSP's Lawrenceville office. This highly anticipated event brought together mentors and mentees from across the chapter and industry. It reflected strong interest and engagement, with numerous applications received from professionals eager to participate in the program. Through a thoughtful application process and targeted outreach efforts, the Mentoring Committee carefully matched participants and ultimately expanded the program to include 10 mentor-mentee pairs. This cohort size was intentionally selected to ensure meaningful connections, personalized engagement, and sustained participation throughout the mentoring cycle, allowing both mentors and mentees to gain maximum value from the experience.

To kick off the evening, we were pleased to welcome Kyrra Hana Mosley, Vice President of WTS NJ, who provided a brief overview of WTS, its mission, and the important role mentoring plays in advancing women within the transportation industry. Her remarks helped set the tone for a collaborative and purpose-driven program year. The mentoring cohort will reconvene for their next monthly session on May 13, which will focus on goal setting and CliftonStrengths, equipping participants with practical tools to support professional development and foster productive, goal-oriented mentoring relationships. We look forward to another successful mentoring cycle and the continued growth and development of emerging and established leaders across New Jersey's transportation community.

If you would like to offer a presentation to our mentor-mentee group, please send an email to our Chair, Melissa Dawson (melissa.dawson@wsp.com), and Vice Chair, Taylor Danson (tdanson@hardestyhanover.com).



COLLEGE OUTREACH

Scholarship Applications now open!

WTS New Jersey (WTS NJ) focuses on engaging emerging students in the transportation field. We are committed to provide exclusive opportunities connecting aspiring transportation professionals with real-world opportunities via internships and full-time employment in the non-profit, public, and private sectors. One way to achieve this is by awarding scholarships to high school, community college, trade school, undergraduate, and graduate school students pursuing studies in transportation, engineering, science, or a related field who demonstrate leadership skills, ability, and interest.

The purpose of the WTS NJ Scholarship is to motivate and reward students who demonstrate innovation and leadership within the transportation industry.

The transportation industry is ever changing, and the future will be dependent on the next generation of transportation professionals.

Categories

We currently offer scholarships in 7 categories:

WTS NJ Graduate Student Scholarship (\$5,000)

WTS NJ Leadership Graduate Student Scholarship (\$4,000)

WTS NJ Undergraduate Scholarship (\$4,000)

WTS NJ Leadership Undergraduate Scholarship (\$4,000)

WTS NJ Jr. College/Technical/Trade School Scholarship (\$2,500)

WTS NJ Transportation YOU High School Scholarship (\$2,500)

Fred Berger Endowed Scholarship (\$2,000)

Scholarships are competitive and based on the applicant's specific transportation goals, academic record, and transportation-related activities or job skills. Students are permitted to submit applications for multiple WTS NJ scholarships for which they meet the eligibility criteria within the same calendar year; however, no candidate shall be awarded more than one (1) scholarship in the same calendar year.

In the event that a WTS NJ scholarship does not receive any applications for the calendar year, the WTS NJ Scholarship Selection Committee reserves the right to select candidate(s) from the overall pool of scholarship applicants in the same calendar year for consideration. Such candidate(s) must meet all eligibility requirements set forth in the secondary scholarship application they are being considered for. Recipients of the WTS NJ scholarships may be eligible to be submitted as our applicants for the WTS International (WTSI) Scholarships.

See our website for eligibility and required application documents - [here](#)

Submit your applications and the required documents by September 18, 2026 to the following: For college and trade school applications, email [Laura Baldacchino](#), WTS NJ College Outreach Vice Chair. For Transportation YOU application, email to [Naa-Adzeley Addo-Garrison](#), WTS NJ Transportation YOU Chair.



WELCOME NEW MEMBERS!

In Q1 2026, WTS NJ welcomed 7 new members for a total chapter membership of 156!

Welcome to our new members:

Kenneth Bobotsky
Chun Ti Huang
Polina Knaster
Cassandra Newton
Addie Shiloh
Helen Tekeste
Megan Young

Want to become a Member?
Click this link to create positive change to transportation with WTS NJ.
[Join Now](#)



UPCOMING EVENTS

- Thursday, April 23 Strikes for Scholarships
- Thursday, April 30 WTS NJ Headshots and Happy Hour
- Tuesday-Thursday, May 5-7 WTS International Annual Conference
- Wednesday, May 20 WTS NJ Technical Series Session #3
- Thursday, May 21 WTS NJ Welcomes NJDOT Commissioner - Grounds for Sculpture
- Wednesday, July 15 WTS NJ Technical Series Session #4
- Thursday, August 6 Swings for Scholarship - Annual Golf Outing
- Wednesday, September 16 WTS NJ Technical Series Session #5
- Wednesday, October 21 WTS NJ Technical Series Session #6
- Wednesday, December 9 WTS NJ Technical Series Session #7

CALL FOR ABSTRACTS

The Programs Committee is continually seeking valuable content to share with our members and fellow technical professionals. Submit your abstracts on cutting-edge transportation topics and join us in presenting workshop where your insights can shape the future of the industry. Let's drive innovation together. Scan the QR Code to Submit

For further details, please visit our [website](#) for updates.



2026 AGENCY AFFILIATES

Thank you for your interest in the WTS New Jersey Agency Affiliates Program. This dynamic partnership formally recognizes public agencies that support and champion our mission to advance women in transportation, while expanding access to WTS NJ programs and reinforcing our shared commitment to inclusion across both the public and private sectors. The Agency Affiliate Program was developed with the support of the Board and input from our Advisory Council, which is composed of representatives from ten New Jersey public agencies.

Our chapter uses these funds to develop a suite of professional development, leadership and networking events designed to further the WTS mission of attracting, sustaining, connecting, and advancing women's careers to strengthen the transportation industry. Additionally, through affiliation, your agency will be contributing to our growing mentoring program as well as scholarships for young women planning to enter the transportation industry.

Based on your selected level, Agency Affiliate benefits include:

- Tickets to this year's Annual Meeting
- Individual WTS NJ annual chapter memberships*
- Presentation and Tickets to Corporate Partners & W/M/S/DBE Networking Event
- Spotlight at Annual Meeting
- Highlight in Agency Spotlight e-blast/social media post
- Highlights in WTS NJ Newsletter and Chapter Events
- Opportunities for Staff to Present at Virtual Sessions
- Agency link on WTS NJ Chapter website
- Job postings on chapter website
- Committee Appointments
- Advisory Council Appointment
- Invitation to Board Retreat

*Includes free attendance at member-only events: Approximately 6 accredited virtual technical sessions and 4 quarterly membership events with reduced pricing at all other events.

Review several affiliate levels available to your agency and subsequent related forms at the end of this newsletter.

Please register by May 29, 2026 to take advantage of a full year of benefits through 2027.

2026 WTS NJ Agency Affiliates Program

Please contact WTSNJBOARD if you have any questions or would like more information about the WTS NJ Agency Affiliate Program.

Additional Contacts:

President, [Jacqueline Rooke](mailto:jrooke@mbakerintl.com) jrooke@mbakerintl.com
 Chair, [Dana Hecht](mailto:dhecht@hardestyhanover.com) dhecht@hardestyhanover.com
 Vice Chair, [Genevieve Clifton](mailto:genevieve.clifton@dot.nj.gov) genevieve.clifton@dot.nj.gov

We sincerely appreciate your consideration in joining WTS NJ as a founding Agency Affiliate, helping to launch a program that will create lasting impact across our public agencies!

2026 Corporate Partnerships – Sign up is Open!

Thank you to all of our returning Corporate Sponsors for your continued support and we are delighted to welcome our new Corporate Partners for 2026—InGroup, TYLin, and JMT. Your partnership strengthens our organization, and we look forward to a successful year ahead together.

If you haven't submitted your Commitment Forms yet, it's not too late! Please visit our website at [Corporate Partners | WTS](#) to explore partnership levels and benefits. We hope you will join us in our commitment to building a more equitable, diverse, and inclusive transportation industry. Thank you for your generous support.

Continuing in 2026, we are excited to offer a full calendar of events designed to attract, sustain, connect, and advance women's careers, further strengthening the transportation workforce of tomorrow. Your firm's continued support helps power our mentoring initiatives and provides critical scholarship funding for students pursuing transportation-related careers. We invite you to visit our website at [Corporate Partners | WTSNJ](#) to explore partnership levels and benefits. We hope you will join us in our commitment to building a more equitable, diverse, and inclusive transportation industry. Thank you in advance for your generous support.

Attention Corporate Partners! Scan here for 2026 Opportunities



CORPORATE PARTNERS (as of April 15, 2026)

DIAMOND PARTNERS



PLATINUM PARTNERS



GOLD PARTNERS



SILVER PARTNERS



M/W/S/DBE PARTNER



Advisory Council

The Advisory Council consist of:

- Clarelle DeGraffe, Director/General Manager PATH, Port Authority of NY & NJ
- Melissa Hayes, Senior Director, Communications & External Affairs, North Jersey Transportation Planning Authority
- Jeannie Kwon, Vice President, Stations - Capital Delivery, AMTRAK
- Lamis Malak, P.E., Deputy Chief Engineer, Design, New Jersey Turnpike Authority
- Jennifer Marandino, Executive Director, South Jersey Transportation Planning Organization
- Ariella Maron, Executive Director, Delaware Valley Regional Planning Commission
- Lana Van Marter, A.A.E., I.A.P. Deputy General Manager, NJ Airports, Port Authority of NY & NJ
- Mary K. Murphy, Director of Planning & Regional Development, Port Authority of NY & NJ
- Laine Rankin, Assistant Commissioner, Local Resources & Community Development, NJDOT
- Binu Thomas, Senior Vice President and Chief Administration Office, NJ Transit
- Michelle Warner, Counsel & Chief Ethics Officer, Delaware River and Bay Authority












OUR FUTURE IS BRIGHT. WE ADVANCE WOMEN. WE ADVANCE TRANSPORTATION.

*Michael Baker International is a Proud Diamond-Level Sponsor
of This Year's Women In Transportation Seminar in New Jersey.*



Michael Baker
INTERNATIONAL

We Make a Difference



Scan the QR code to learn more
about how Michael Baker is
making a difference for our clients
and the communities we serve.

MBAKERINTL.COM

Explore with us

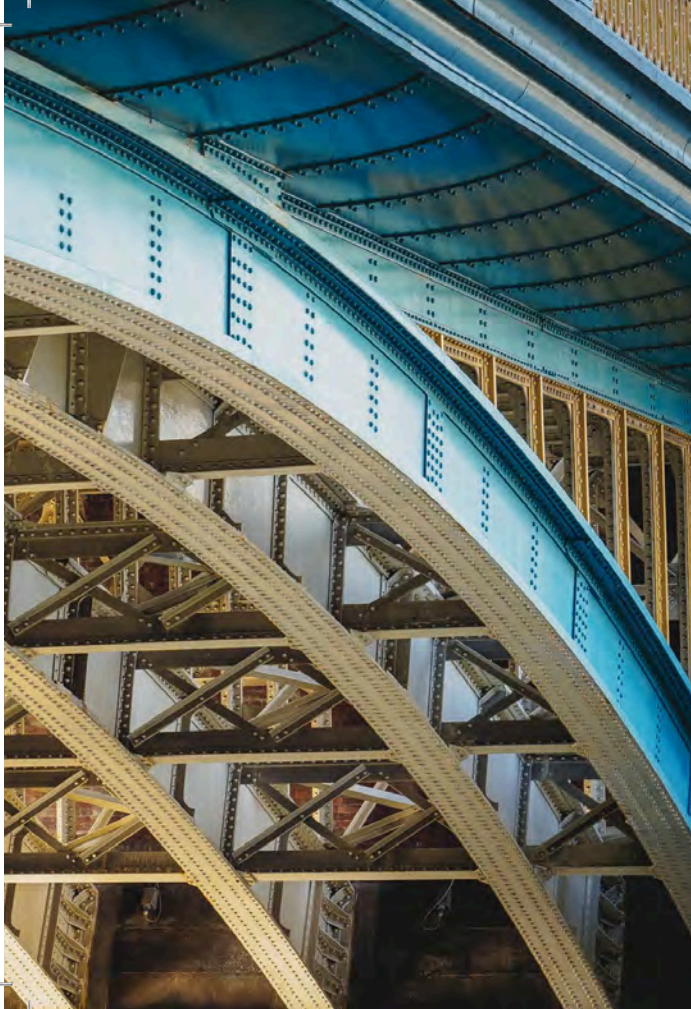
Designing the foundation of New Jersey's infrastructure

Depend on our team to deliver expert solutions on the schedule you demand, while making sure quality, durability, and safety are built into every mile of your transportation project. Let's partner to make the projects of today the efficient, effective infrastructure of tomorrow.



Nationwide
Terracon.com

- Facilities
- Environmental
- Geotechnical
- Materials



Bridging the gap between technology and sustainability.

Jacobs is a globally recognized leader in the development of innovative, safe, sustainable bridge solutions. We offer a full spectrum of services for every bridge type and scale. Above all, we are proud of our long history of connecting communities, and creating sustainable opportunities for social change and economic development.

We tackle the world's toughest challenges.

Follow us @JacobsConnects | [jacobs.com](https://www.jacobs.com)



Jacobs

Challenging today.
Reinventing tomorrow.



PROVIDING THE HIGHEST QUALITY SERVICE
TO MEET OUR CLIENTS' NEEDS

BRIDGE INSPECTION

HIGHWAY / TRAFFIC
ENGINEERING

BRIDGE DESIGN & REHABILITATION

BUILDING
INSPECTION

CONSTRUCTION INSPECTION &
SUPPORT



New Jersey • New York • Pennsylvania



Celebrating 125 Years of Excellence

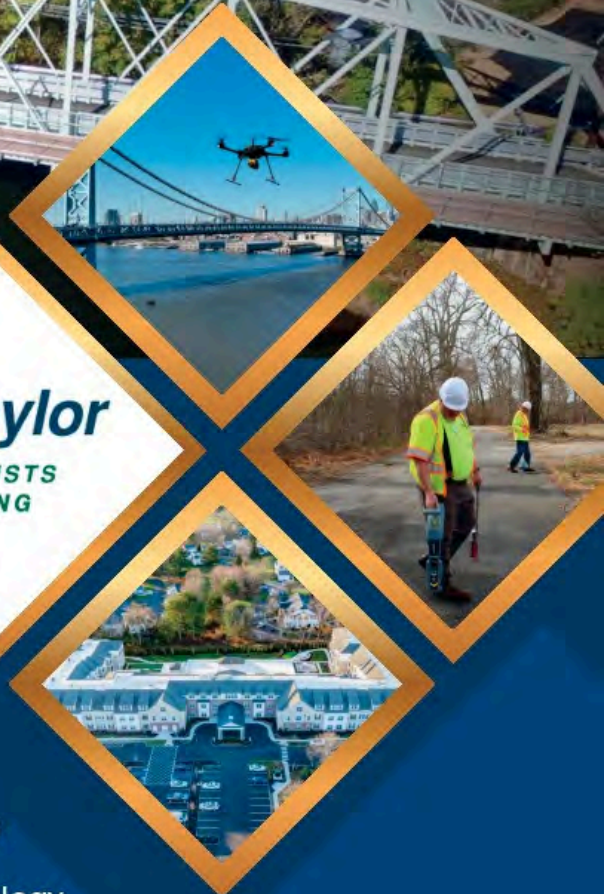
125
TWT

★ 1901-2026 ★

Taylor Wiseman & Taylor

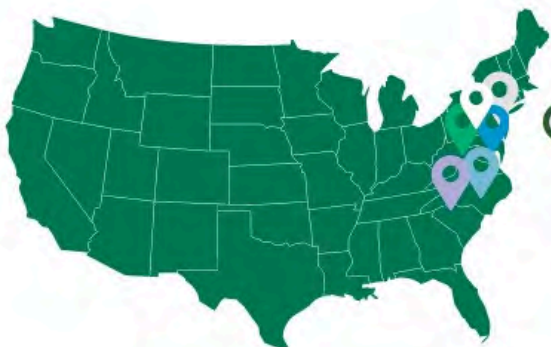
ENGINEERS | SURVEYORS | SCIENTISTS
SUBSURFACE UTILITY ENGINEERING

125 Years of Trusted Engineering Solutions



SERVICES

- ✓ Transportation Engineering
- ✓ Site/Civil Engineering
- ✓ Subsurface Utility Engineering
- ✓ Land Surveying
- ✓ Geospatial Services
- ✓ Environmental Geology
- ✓ Infrastructure Design & Analysis



CONTACT US

Corporate
Mount Laurel, NJ
 804 East Gate Dr.,
 Suite 100
 Mount Laurel, NJ 08054
 (856)-235-7200



VINELAND, NJ

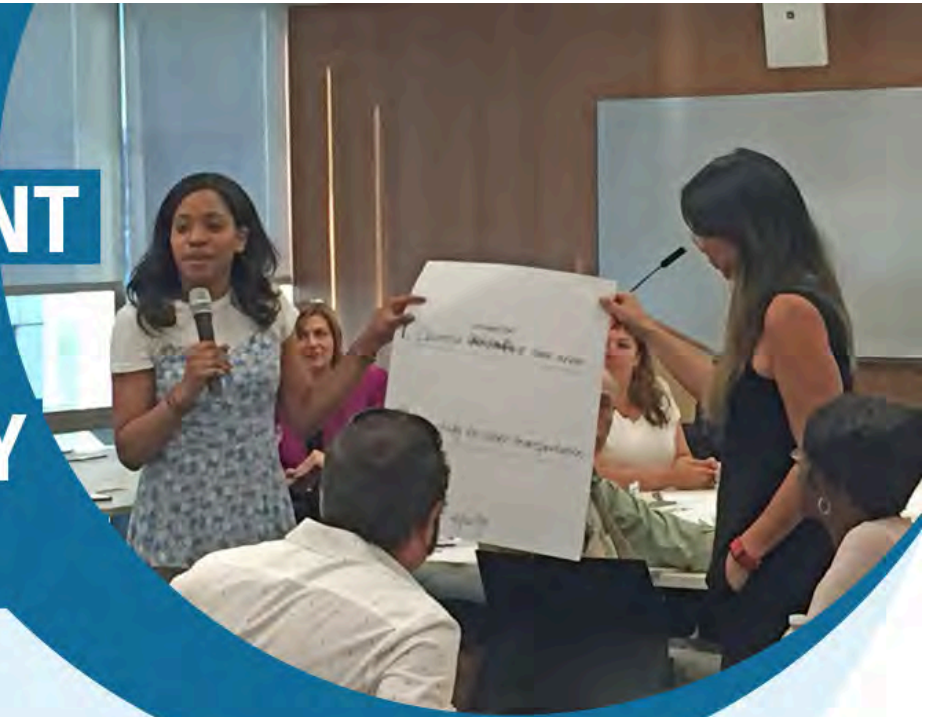
BLUE BELL, PA

BETHLEHEM, PA

APEX, NC

CHARLOTTE, NC

WHERE ENGAGEMENT MEETS COMMUNITY VOICES



InGroup provides community outreach and public engagement for transportation and infrastructure projects across New Jersey and the region.

From planning through construction, we help teams build trust, elevate community voices, and move projects forward with clarity and confidence.

Outreach Expertise



Targeted stakeholder engagement



Environmental justice & cultural proficiency



Digital, PR & marketing programs



Virtual & in-person engagement

Proud to support **Women in Transportation**
and a more connected, equitable future.



888.772.6400 • wbe@ingroupinc.com • www.ingroupinc.com
Certified and Qualified NJ / NY State WBE | SBE | DBE



AmerCom Corporation
Consulting Engineers
1259 Route 46 East, Building # 2
Parsippany, New Jersey 07054
(973)-402-6111
www.amercomcorp.com

PROVIDING AWARD WINNING PROFESSIONAL ENGINEERING SERVICES FOR OVER 42 YEARS

- SURVEY AND MAPPING
- RIGHT-OF-WAY ENGINEERING
- GEOTECHNICAL ENGINEERING
- CONSTRUCTION MANAGEMENT & INSPECTION
- COST ESTIMATING
- TRAFFIC SIGNAL DESIGN
- MPT DESIGN
- TRAFFIC DATA COLLECTION
- UTILITY ENGINEERING
- SITE/CIVIL ENGINEERING
- COASTAL ENGINEERING
(REVTMENT DESIGN, BULKHEADS, PIERS)
- STRUCTURAL DESIGN



2026 WTS New Jersey Agency Affiliates LEVELS AND BENEFITS



Chapter Agency Affiliates Level	DIAMOND	PLATINUM	GOLD	SILVER	BRONZE (MEMBERSHIP ONLY)	SUPPORTER
2026 Contribution	\$5,000	\$4,000	\$3,000	\$2,000	\$1400/\$700	\$0
Tickets to Annual Meeting	4	3	2	1	-	-
Individual WTS NJ annual chapter memberships*	5	4	3	2	10/5	-
Presentation and Tickets to Corporate Partners & W/M/S/DBE Networking Event	5	5	5	5	5	5
Spotlight at Annual Meeting**	Full page (7.5"W x 10"H)	1/2 page (7.5"W x 4.75"H)	1/2 page (7.5"W x 4.75"H)	1/4 page (3.5"W x 4.75"H)	1/4 page (3.5"W x 4.75"H)	-
Highlight in Agency Spotlight e-blast/social media post**	✓	✓	✓	✓	✓	✓
Highlights in WTS NJ Newsletter and Chapter Events**	✓	✓	✓	✓	-	-
Opportunities for Staff to Present at Virtual Sessions**	✓	✓	✓	✓	-	-
Agency link on WTS NJ Chapter website**	✓	✓	✓	✓	✓	✓
Job postings on chapter website**	✓	✓	✓	✓	-	-
Committee Appointment (quantity minimum) **	3	2	2	1	1	1
Advisory Council Appointment	1	1	1	1	1	1
Invitation to Board Retreat	1	1	1	-	-	-

*Includes free attendance at member-only events: Approximately 6 accredited virtual technical sessions and 4 quarterly membership events with reduced pricing at all other events.

**Optional based on Public Agency Preference.

2026 WTS New Jersey Agency Affiliates COMMITMENT FORM

To participate in the WTS New Jersey Agency Affiliates Program, **please return a copy of this commitment form via mail to the address below or via email to wtsnjboard@gmail.com.**

Agency/Organization: _____

Address: _____

City: _____ State: _____ Zip: _____

Name of Contact Person: _____

Email: _____ Phone: _____

Marketing Contact Name (for ad and spotlight info): _____

Marketing Contact Email: _____ Phone: _____

Agency Social Media (so we can tag our Partners!!): _____

SELECTED LEVEL OF PARTNERSHIP

- Diamond Affiliate - \$5,000
- Platinum Affiliate - \$4,000
- Gold Affiliate - \$3,000
- Silver Affiliate - \$2,000
- Bronze Affiliate (Membership Only) - \$1400 or \$700
- Supporter - \$0

Payment Options:

1. Zelle to wtsnjboard@gmail.com
2. [Bill.com](https://www.bill.com) to wtsnjboard@gmail.com
3. Company Checks made payable to: "Women's Transportation Seminar in New Jersey" sent to WTS New Jersey, 335 George Street, Suite 4, Box 1133, New Brunswick, NJ 08901.

Would you like to be contacted about event-specific partnership/support/promotional opportunities, should WTS New Jersey choose to make such opportunities available in 2026?

- Yes, please contact me about event-specific opportunities when they arise
- No

THANK YOU!!

We appreciate your support of WTS New Jersey and the advancement of women in our region.

[New Jersey | WTS \(wtsinternational.org\)](https://www.wtsinternational.org)

2026 WTS New Jersey Agency Affiliates

PAID CHAPTER MEMBERSHIP APPLICATION



Please complete one (1) Paid Membership Application per applicant.

Your Name: _____ Title/Position: _____

Agency/Organization: _____

Primary Mailing Address: _____

City: _____ State: _____ Zip: _____

Email: _____ Phone: _____

MEMBERSHIP TYPE

New Member* Renewal

* Additional \$10 fee for first time members or renewing members that are 90 days past their expiration date.

MEMBERSHIP LEVEL

Membership		Level	2026 Cost
Professional Membership*	<input type="checkbox"/>	Emerging Leader	\$75
	<input type="checkbox"/>	Public Sector/Educator	\$140

DEMOGRAPHICS

[Optional. Help WTS International better service our members and understand the results of recruiting efforts. This information is confidential and is not criteria for membership.]

Gender

<input type="checkbox"/> Female	<input type="checkbox"/> Self-Identify
<input type="checkbox"/> Male	<input type="checkbox"/> Chose Not to Disclose
<input type="checkbox"/> Non-Binary	

Sector

<input type="checkbox"/> Association
<input type="checkbox"/> Public Sector
<input type="checkbox"/> Other (Explain)___

Ethnicity

<input type="checkbox"/> Black	<input type="checkbox"/> East Indian	<input type="checkbox"/> Middle Eastern	<input type="checkbox"/> Chose Not To Disclose
<input type="checkbox"/> Asian	<input type="checkbox"/> Hispanic/Latino	<input type="checkbox"/> Indigenous	<input type="checkbox"/> Other (Explain)_____
<input type="checkbox"/> White	<input type="checkbox"/> Multi-Racial	<input type="checkbox"/> Pacific Islander	

QUESTIONS?

For additional information on WTS New Jersey Membership, please contact:
 Holly DiDonato, Membership Director at Large holly@trinitysubsurface.com;
[New Jersey | WTS \(wtsinternational.org\)](http://New Jersey | WTS (wtsinternational.org))

2026 WTS New Jersey Agency Affiliates SUBMITTAL LIST AND SCHEDULE



Chapter Partnership Level	DIAMOND	PLATINUM	GOLD	SILVER	BRONZE/ SUPPORTER	Due Date	Send Information To:
2026 Contribution	\$5,000	\$4,000	\$3,000	\$2,000	\$1400 or \$750/\$0		
Commitment form, check and paid membership forms (if applicable)						5/29/2026	Email forms to: wtsnjboard@gmail.com Please send checks to: 335 George Street, Suite 4, Box 1133 New Brunswick, NJ 08901
High-resolution agency logo							wtsnjboard@gmail.com
Agency Spotlight Information <ul style="list-style-type: none"> • 2-3 sentence firm bio • Headshot (include name and title) • Quote on why your Agency supports WTS NJ 							wtsnjboard@gmail.com
Annual Meeting Spotlight	Full page (7.5" W x 10" H)	1/2 page (7.5" W x 4.75" H)	1/2 page (7.5" W x 4.75" H)	1/4 page (3.5" W x 4.75" H)	1/4 page (3.5" W x 4.75" H)		wtsnjboard@gmail.com