



Advancing women  
Advancing transportation  
> Iowa

NOVEMBER 11th, 2022

The Women's Transportation Seminar (WTS) is a professional organization dedicated to the advancement of women in transportation. With more than 8,500 members, both women and men, in 66 chapters worldwide, WTS is helping women find opportunity and recognition in the transportation industry. The Iowa Chapter had a great year in 2022. Sponsorship in 2022 supported the following events and initiatives:

- Virtual speaker meetings, including a talk with the Director of the Iowa DOT
- A WTS Booth at STEM Day at the Iowa State Fair
- An in-person happy hour
- WTS Iowa scholarship recipients
- A bike night social event in Des Moines and Cedar Rapids

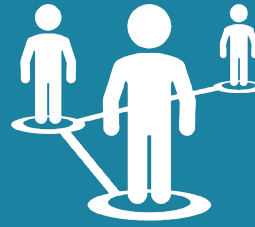
We hope you will consider a commitment to WTS-Iowa.

Information about the Iowa Chapter and our upcoming events can be found on our website [www.wtsinternational.org/chapters/iowa](http://www.wtsinternational.org/chapters/iowa).

Your support as a 2023 Chapter Sponsor will help us provide these and other benefits to our members:



Association with a leading organization for professionals in the transportation industry.



Access to industry leaders and networking opportunities with other professionals in the business.

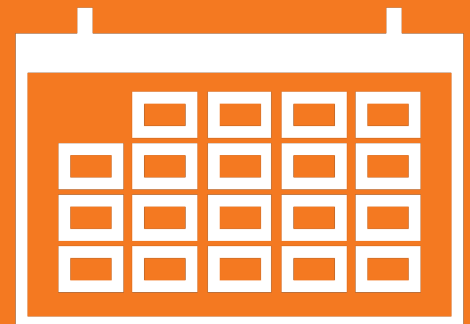
Carrying out our mission to support the advancement of women in the transportation industry.

Establish a scholarship fund for female college students pursuing careers in the transportation industry.



Recognizing WTS members who volunteer their time, allowing them to enhance their abilities in event planning, leadership, communication, and financial skills.

Programs and events that bring timely topics and informative speakers to your attention.



Encouraging the next generation of leaders in transportation as they achieve their educational and professional goals through programs like Transportation YOU.

Our board of directors have several great program and professional development initiatives planned for 2023. We will continue to grow our chapter and reach within the transportation community. We will continue our scholarship fund to reach the next generation of women in transportation. Please consider donating at one of the membership levels listed below

	Friend of the Chapter \$500	Supporting Sponsor \$1,000	Key Sponsor \$2000
Name/Logo on website	■	■	■
Name/Logo on e-blasts	■	■	■
Name/Logo at events	■	■	■
Chapter event registration(s)	1	2	4
Ticket(s) to appreciation event	2	4	8
Scholarship fund percentage	5%	10%	20%
Newsletter feature article		■	■
Job posting on website			■





A photograph of a conference stage. A large projection screen at the top displays the text "WELCOME AND THANK YOU FOR JOINING US TO LEARN ABOUT US" and the WTS logo with the tagline "Advancing Research in Transportation". Below the screen, a woman in a white lab coat stands at a podium. To her right, two other people are seated on a panel. The foreground shows the backs of several audience members seated in chairs.

WELCOME AND THANK YOU FOR JOINING US TO  
**LEARN ABOUT US**



**In-kind sponsorships are also a possibility.** If this is something you or your company would like to pursue, please contact our Sponsorship Chair, Ashley Cook, and we can discuss the many ways you could directly sponsor an event, scholarship fund, or event materials.

On behalf of the WTS Iowa Chapter, we thank you for your support and look forward to partnering with you in the future. If you have any questions, please contact our Sponsorship Chair, Ashley Cook via email at [aecook.isu@gmail.com](mailto:aecook.isu@gmail.com)

Sincerely,

**Madeline Schmitt**

WTS Iowa President

# 2023 WTS IOWA CHAPTER CORPORATE SPONSORSHIP FORM

***Yes! Our company would like to support WTS Iowa Chapter.***

Company Name \_\_\_\_\_  
Address \_\_\_\_\_  
City, State, Zip \_\_\_\_\_  
Contact Name \_\_\_\_\_  
Phone \_\_\_\_\_  
Email \_\_\_\_\_

## **Sponsorship Level:**

- In-Kind Sponsorship (explain idea of sponsorship below or we can discuss further)  
\_\_\_\_\_
- Key Sponsor \$2,000
- Supporting Sponsor \$1,000
- Friend of the Chapter \$500
- Enclosed is our check payable to WTS Iowa Chapter

All contributions are deductible to the full extent of the law. For Venmo or Paypal payment options, please send an email to the treasurer directly.

Signature \_\_\_\_\_  
Date \_\_\_\_\_

Please complete this form and send with a check to:

WTS Iowa Chapter, Treasurer  
P.O. Box 2291  
Ames, IA 50010

Email:  
wts.iowa.treasurer@gmail.com