



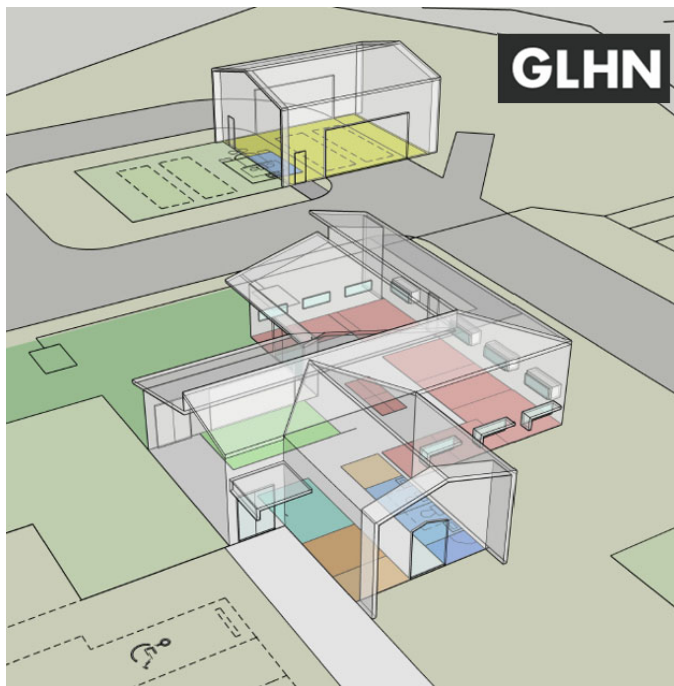
2022 WTS State of the Streets

March 2022





GLHN



GLHN



PSOMAS

Current Projects

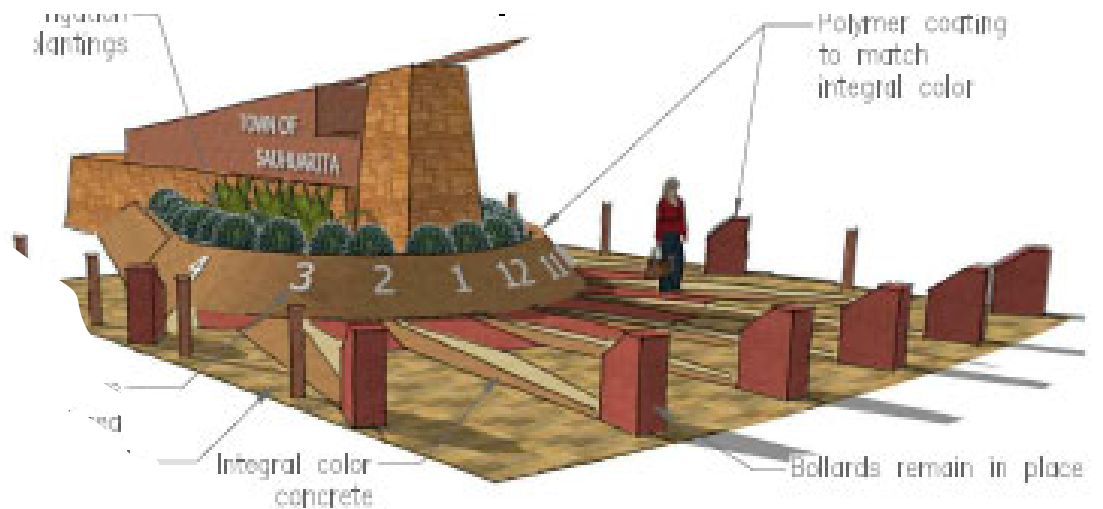
- Quail Crossing Extension – Construction began November 29, 2021
- Twin Buttes Facility Design – 50% plans complete
- WW Lab Construction – Construction began February 2021



PSOMAS

Current Projects

- Pavement Preservation – Mill and overlay in 6 subdivision totaling almost 9 lane miles of road. These subdivisions were the last areas of “fair” pavement in the Town. **Average OCI of Town pavement for FY 22 = 78**
- Facilities Work – Interior and exterior painting; brick restoration; bathroom renovations and sundial renovations. All on-going.



FY 23 CIP Parks and Recreation

Anamax Park Splash Pad:

Design and construction of a splash pad at Anamax Park. The splash pad will also include a restroom and extended sanitary sewer connections.

Splash pads provide a new amenity in parks that all ages and abilities can use. It creates an outdoor community gathering spot, expands recreational opportunities, and serves as an oasis for cooling off from Sahuarita's hot summer temperatures.



FY 23 CIP Parks and Recreation

Twin Buttes Park

In FY21, with assistance from the National Park Services Rivers, Trails & Conservation Assistance Program, Parks, Recreation & Community Services has developed a master plan for trails and amenities at Twin Buttes Trail Park. The first amenities needed are a trailhead, restrooms, and multiple looping trails. This project would include the construction of the trailhead, restrooms, and the building of trails.



Parks and Recreation

Park Shade Replacement Program:

Replace and enhance existing shade canopies and ramada roofs over playgrounds, picnic tables, benches, dugouts, and bleachers located in Town parks. Shade canopies and ramadas over park equipment provides year-round park use and enjoyment for Town residents and visitors and enhances park patron safety when temperatures are high, and apparatus/equipment gets hot.



FY 23 Pavement Preservation

Approximately 40 lane miles of Pavement Preservation planned for FY23.

Mill and Overlay = 9 lane miles

Conventional Chip Seal with TRMSS Seal Coat = 10 lane miles

TRMSS Seal Coat = 21 miles

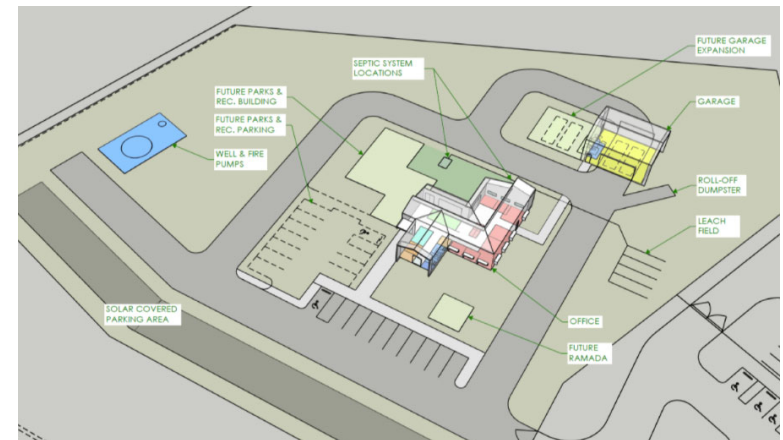
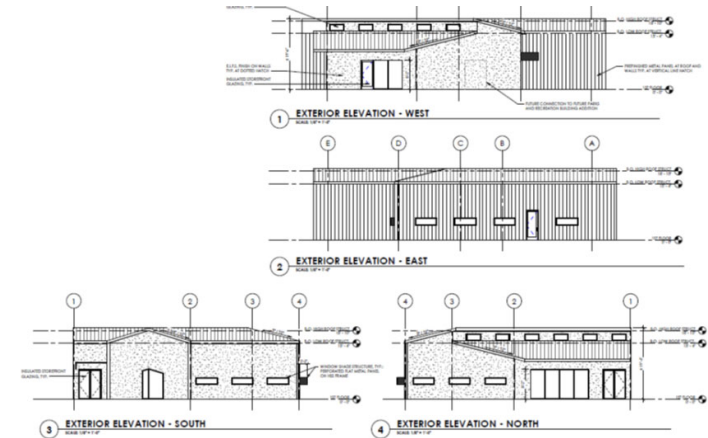


FY 23 CIP Public Works

Twin Buttes Facilities and Utilities Construction:

In 2019 the Town purchased 93 acres of property on Twin Buttes with the intention of using the majority of the site for recreation purposes, but a portion of the property (approximately 20 acres) was anticipated to be used by Public Works, Parks and Recreation and the Police Department for much-needed facilities for materials storage, equipment maintenance activities, vehicle impound, employee offices, etc. Without utilities and facilities at the site, none of these anticipated uses, except for passive recreation, can be facilitated.

This project, estimated at \$3.3M, will include the installation of all necessary utilities as well as the construction of approximately 2,800 sf of office space, a two-bay garage facility and other site improvements.



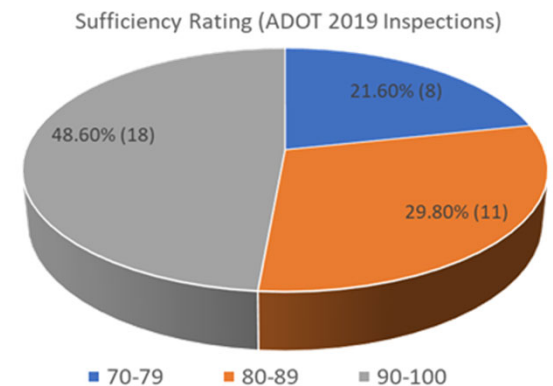
FY 23 CIP Public Works



Bridge and Structure Repairs

There are three major categories of maintenance and repair tasks to be conducted on the Town's bridges:

1. Removal of sediment, debris, and vegetation (22)
2. Scour repairs (6)
3. Structural repairs (14)



FY 23 CIP Wastewater

Water Reclamation Facility Re-Rating Upgrades:

This CIP is for the design and construction of the upgrades associated with the conclusions from the re-rating study to increase the WRF capacity to 2.20 MGD. This design is anticipated to begin in FY22 in accordance with our regulatory requirements. The Town anticipates the construction would begin in FY 23 as a CMAR in order to stay in compliance with our permits and regulations.





Questions