

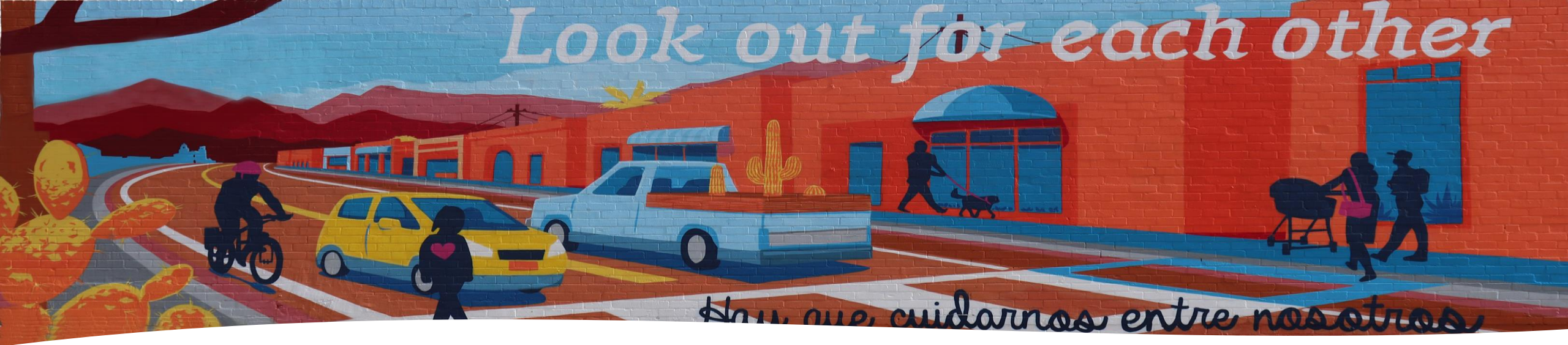
# Women's Transportation Seminar State of the Streets

January 20, 2022

**Deputy Directors – Shellie Ginn, Robin Raine, Blake Richards**



DEPARTMENT OF TRANSPORTATION AND MOBILITY



## STEPS WE'VE TAKEN

- 5-year Traffic Safety Plan
- Strategic Communication
- Slow Streets
- Complete Streets Initiative
- Prop 101
- Move Tucson
- Adaptive Signalization
- Smart Cities

## WHAT WE HAVE PLANNED

- New Director
- 311
- RTA Next
- Bus Rapid Transit
- Federal Infrastructure
- Smart Mobility
- Traffic Center

**Safety continues to be a top priority for the Department of Transportation & Mobility**



# DTM Operations



5,500 MILES OF ROADWAY



265 EMPLOYEES



600 SIGNALIZED INTERSECTIONS


**SAFETY**

**TARGET**  
**ZERO** 

get home safe



# STRATEGIC COMMUNICATION





Tucson Department of Transportation & Mobility

19h · 🌐

Bridge girders are being installed over the Sixth Avenue Underpass as part of the Downtown Links Improvement Project. This bridge will extend Barraza Aviation Parkway to Sixth Street.

For more information on the project visit [downtownlinks.info](https://downtownlinks.info)







Tucson Department of Transportation & Mobility @Tucson\_DTM

3 days ago

Keeping you safe Tucson! DTM Streets Maintenance crews are initiating Operation Freeze and will spray bridge decks this afternoon to make sure you can get to and from your destination safely. Please watch out for our crews and stay warm!





STRATEGIC PLAN



TUCSON

TRANSPORTATION & MOBILITY



**FOLLOW DTM:**

 [@TucsonDTM](https://www.facebook.com/TucsonDTM)

 [@Tucson\\_DTM](https://twitter.com/Tucson_DTM)

 [@tucson\\_dtm](https://www.instagram.com/tucson_dtm)



# TUCSON SLOW STREETS



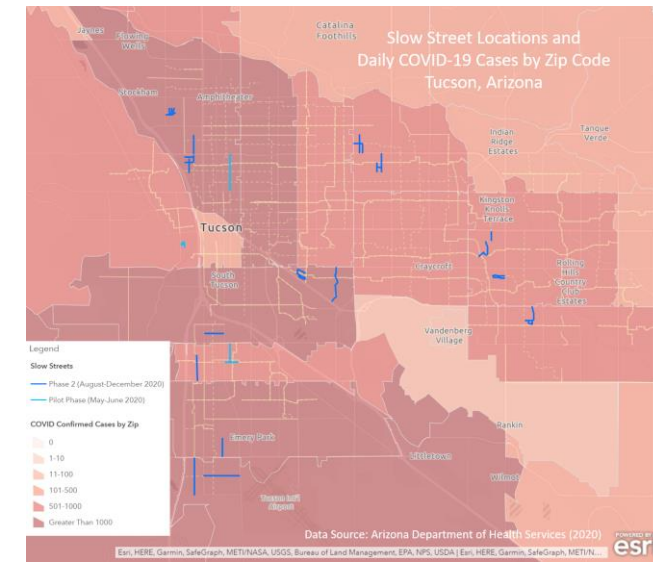
WHEN STREETS  
ARE PLACES,  
THERE'S NO  
LIMIT TO WHERE  
YOU CAN GO.



## REIMAGING HOW WE USE OUR RESIDENTIAL STREETS

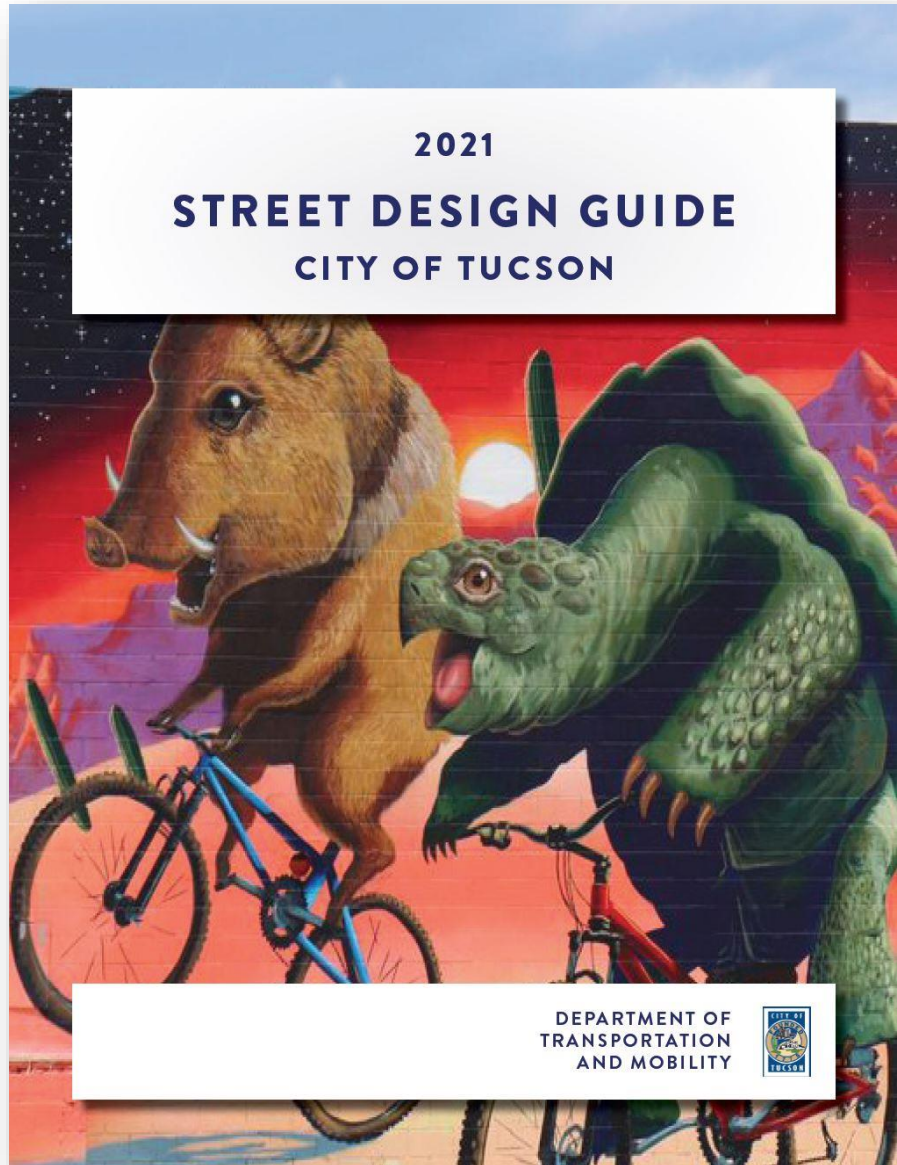
- Traffic calming improvements
- Safe space to walk, bike, run, and play
- Reduces “cut-through” traffic and slows down drivers
- Initiative that took place during the pandemic, staff is reevaluating the program's future

<https://www.tucsonaz.gov/TucsonSlowStreets>





# COMPLETE STREETS



Safe, connected and equitable transportation network for all anticipated users and transportation modes.

- High visibility crosswalks
- Protected/separated bike lanes
- Green markings to alert drivers and bicyclist to crossing conflict areas
- Promote pedestrian and bicycle safety.

Tucson Mayor and Council adopted the [Complete Streets Design Guide](#) in November 2021.



<https://www.tucsonaz.gov/tdot/complete-streets-tucson>



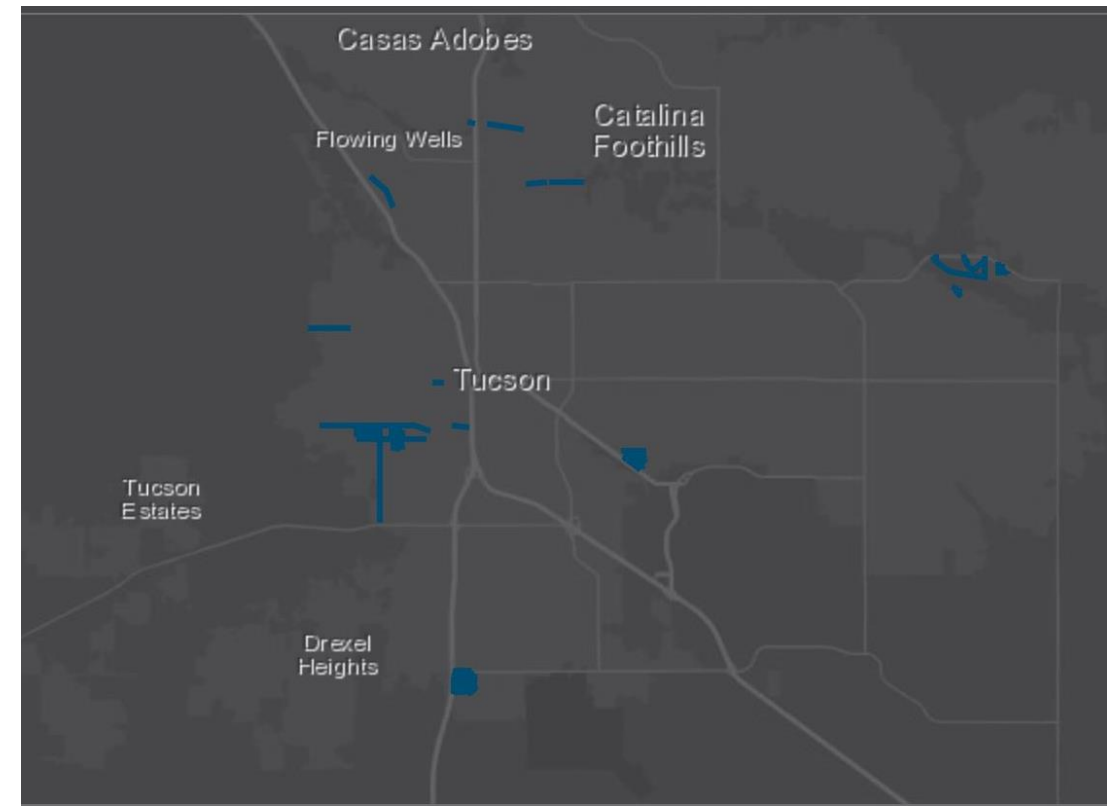
# Looking back at 2021



**155 ARTERIAL** lane miles complete through 2021

**113 LOCAL** lane miles complete through 2021

**FOG SEAL PROGRAM** - Keeping the good roads good



<https://tucsondelivers.tucsonaz.gov/pages/better-streets>





Avenida Los Reyes - BEFORE



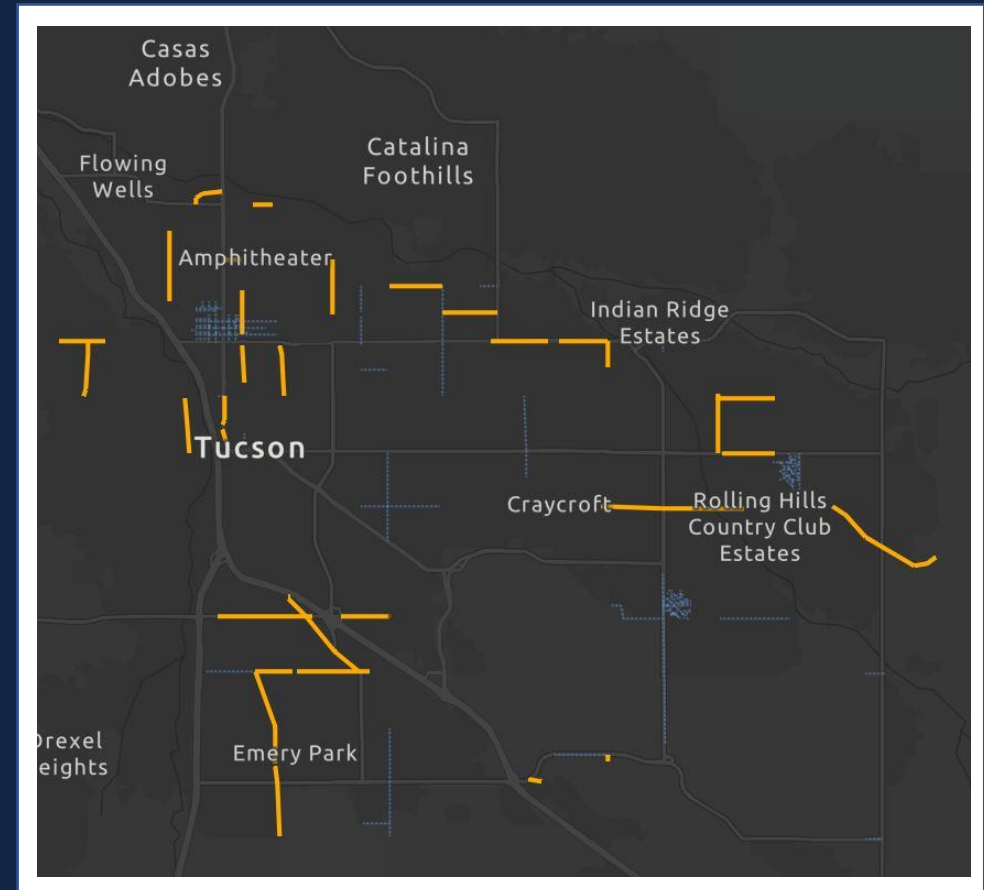
Avenida Los Reyes - AFTER

# FUTURE OF BETTER STREETS

Prop 101 improvements in 2022:

**131 LANE MILES - Arterial Roads (Including fog seals)**

**71 MILES - Residential neighborhoods**



<https://tucsondelivers.tucsonaz.gov/pages/better-streets>



# PROP 407

## PROTECTING ALL MODES OF TRANSPORTATION

9-year program – 3 phases

Currently in Phase 1

Start design on first Phase 2 projects in 2022

### Bicycle Boulevards

- Traffic calming
- Push-buttons at major streets
- Enhanced neighborhood street safety
- Enhanced crosstown bicycle & pedestrian facilities



<https://tucsondelivers.tucsonaz.gov/pages/parks-connections>

### Shared-Use Paths & Greenways

- Off-street bicycle and pedestrian paths
- Safe and comfortable connectivity
- Landscaping for shade and beautification

### Pedestrian Safety & Walkability

- Complete ADA-accessible sidewalks
- Lighting
- Enhanced Pedestrian Crossings
- Landscaping for shade and beautification

### Protected Bike Lanes

- Enhanced bike lanes on collector and minor arterial streets
- Provide physical protection from vehicles using curbs, car parking, or landscaping
- Intersection improvements





# **Tucson Mayor and Council Approved \$14 Million Investment to Neighborhood Roads**





# Current Capital Projects

## Downtown Links

Completion estimated for Summer 2023



### Barraza-Aviation Parkway to I-10

- Access and connections for pedestrians, bicyclists and motorists
- New and safer railroad crossings
- Multi-use paths
- Improved sidewalks and bike lanes
- Public art

## Broadway West

Completion estimated for March 2022



### Euclid Ave to Country Club Rd

- 90" Storm drain throughout project limits
- Bus pullouts
- Bike lanes
- Sidewalks
- HAWK crossings
- Landscaping

## Houghton Road Corridor

Completion estimated for March 2022



### Valencia Rd to Mary Ann Cleveland Wy

- Drainage improvements
- Bus pullouts
- Bicycle and pedestrian facilities
- Native landscaping
- Roadway lighting
- Public art



# LOOKING AHEAD IN 2022

**Grant Rd. Phase 3 & 4** – Palo Verde Ave. to Venice Pl.

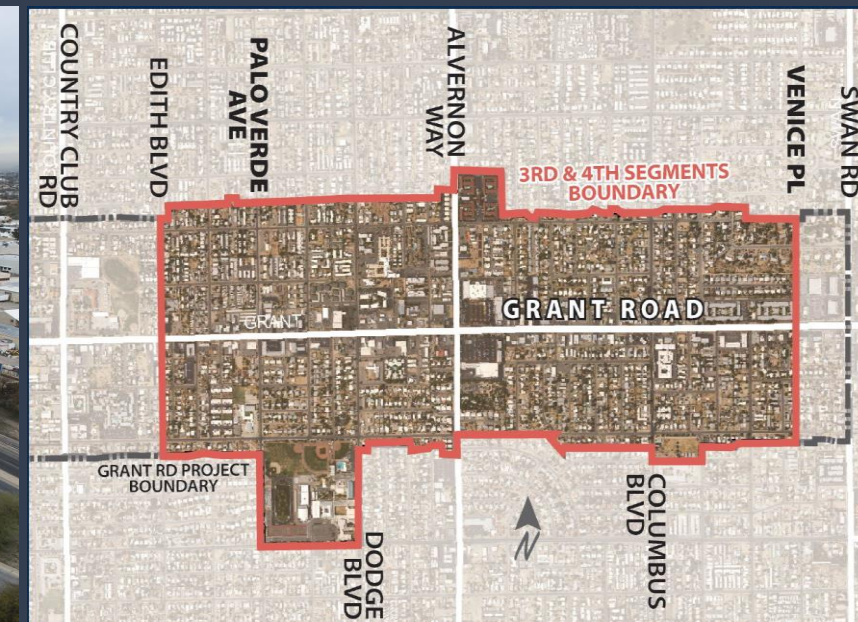
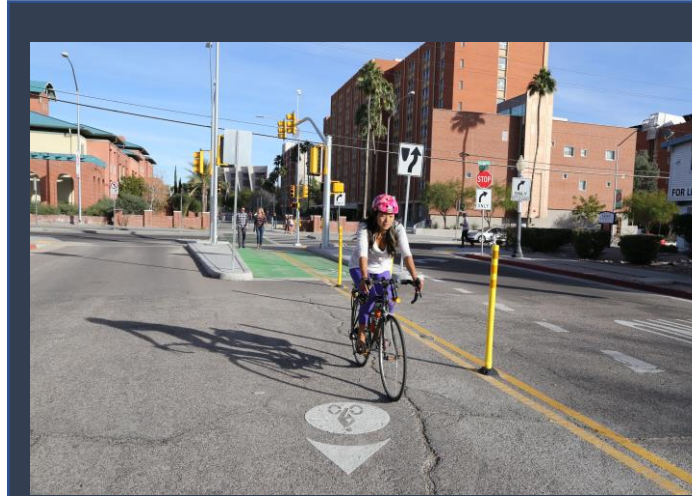
<https://dtmprojects.tucsonaz.gov/>

**22<sup>nd</sup> St. Bridge** – Kino Pkwy. to Tucson Blvd.  
(Spring 2022)

**Silverbell Road** – Goret Rd to El Camino del Cerro  
(Summer 2022)

**Bicycle Boulevards**  
**Pedestrian Safety & Walkability**  
**Shared-Use Paths & Greenways**

**HSIP Projects –**  
Design to begin Summer of this year







APPROVED BY MAYOR AND  
COUNCIL IN DECEMBER 2021!

### COMMUNITY PRIORITIES:

**Safety** to reduce number of people killed or injured on Tucson's streets, especially people walking and biking.

**Maintenance** for Tucson's aging transportation system.

**Efficiency** for crosstown travel by updating traffic signals and modernizing corridors.

**Choices** for more high-quality travel options like comfortable, connected, and accessible infrastructure.

<https://movetucson.org/>

ROADWAY IMPROVEMENTS CONDUCTED THROUGH  
A COMPLETE STREETS LENS







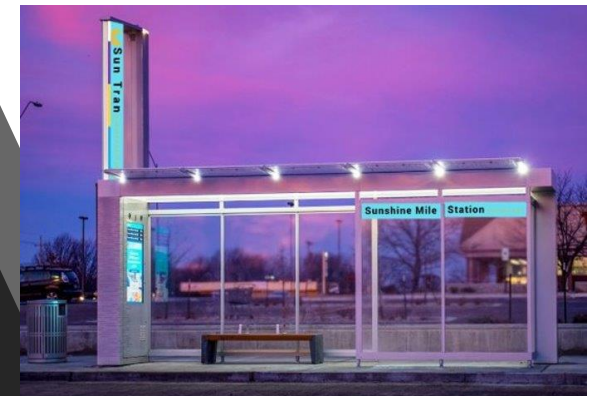
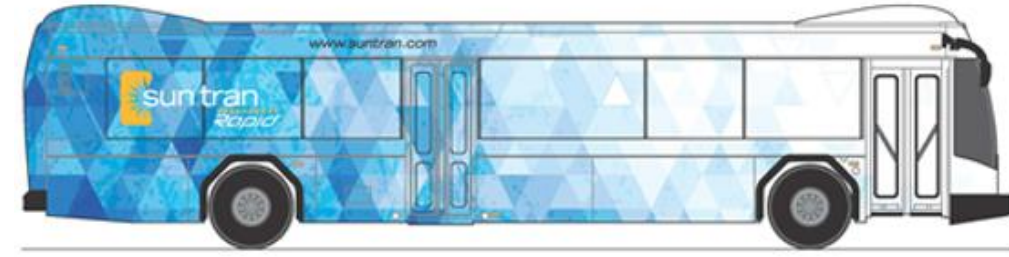
Electric Buses





# Introduce a higher-level service on Broadway

- Higher Frequency with service every 10 minutes
- Upgraded/refurbished bus stops and shelters
- Improved technology
- Direct Service from Houghton Road to Ronstadt Transit Center Downtown
- Innovative branding



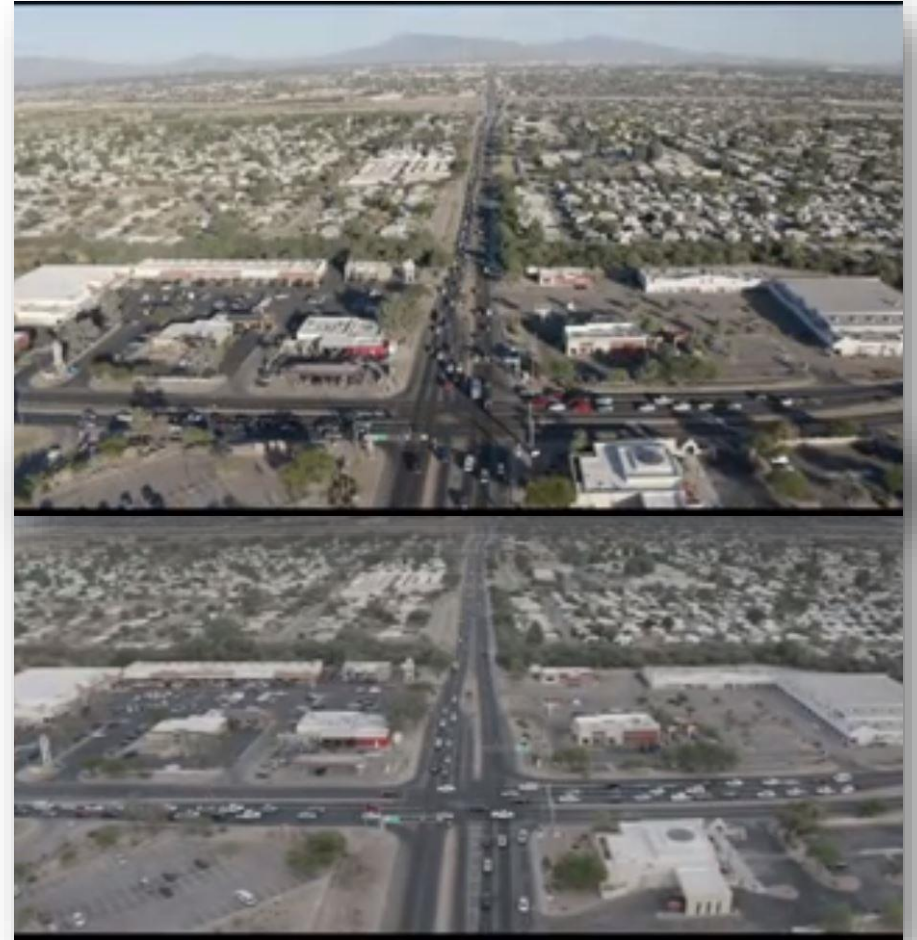


# Smart Mobility



## Adaptive Signalization

- Corridor 1: Campbell Ave. (Irvington Rd. to Valencia Rd.) & Park Ave. (Irvington Rd. to Valencia Rd.)
- Corridor 2: Ajo Way (Mission Rd. to Park Ave.) & 12<sup>th</sup> Ave. (Irvington Rd. to Drexel Rd.)





# Traffic Center

Will Assist DTM in Reacting and Planning

## Virtual Traffic Center:

- Monitor
- Compile data
- Share Information





# **A look back at 2021**



Click to watch

[https://youtu.be/X\\_JnRp9sFo](https://youtu.be/X_JnRp9sFo)



# THANK YOU!



TUCSON >>   
**TRANSPORTATION**   
**& MOBILITY** >> 