

ANNUAL REPORT 2013



Advancing Women in Transportation
Greater New York Chapter



DEAR VALUED MEMBERS:



Mary K. Murphy

2013 was a very exciting year for WTS-GNY! The Board and committee chairs continued to provide an array of programs and networking opportunities that have been the corner-

stone of our chapter. The Board focused on key strategic planning goals including:

- Transparency/Openness/Succession Planning
- Creating and Maintaining Community
- Demonstrating the Value of Membership
- Providing Greater Variety of Program Options

This year, we held another very successful General Membership meeting in April at which members and prospec-

tive members had a chance to learn more about WTS and share their thoughts on programing and growing our chapter. This annual report highlights the success we have had on both fronts this year.

To increase our membership, we re-purposed our Spring Fling event to provide incentives for new members to join WTS on the spot – and it worked! We also worked with WTS International's incentives for public-sector members, which further boosted our numbers. We continued to offer member-only opportunities and plan to do more of that in the future. In addition, we targeted growth in our New Jersey programing and, as a result, have increased programing revenue from that state by more than 20 percent. There are always challenges covering such a large and diverse geographic area, but we have proven time and time again that we at the WTS-GNY

Chapter are up to the challenge. As you will see throughout this report, our dinner programs and especially our Gala held at Grand Central Terminal were premier events – with our Gala attracting a record number of attendees!

So as I officially end my term as president of this extraordinary WTS chapter, I want to thank the Board, the Advisory Board, committee chairs, and all of our members. It has been an honor to serve as president these last two years. With the new Board in place under the leadership of Beth DeAngelo and her team I know this organization is poised to continue to do great things in advancing women in the transportation industry and to take us to the next level! Thank you all!!

Sincerely,
Mary K. Murphy
President 2012-2013

GNY Chapter's 2013–2014 Corporate Partners

CHAIRMAN	EXECUTIVE	PRESIDENT	ASSOCIATE	W/M/DBE PARTNERS
AECOM	Cubic Transportation Systems, Inc.	AKRF	Cambridge Systematics	Armand Corporation
Greenman-Pedersen, Inc.	General Contractors Association of NY	Arup	Dewberry	Arora and Associates
HAKS	STV	CH2M Hill	Gilbert Tweed Associates	B. Thayer Associates
Jacobs		HDR	Kawasaki	EnTech Engineering, P.C.
Parsons Brinckerhoff		HNTB	The Louis Berger Group	Envision Consultants, Ltd.
Vanasse Hangen Brustlin, Inc.		Parsons	NY Building Congress	Robinson Aerial Surveys, Inc.
			Stantec Inc.	Stellar Services
			URS Corporation	Studio L'Image
			Weidlinger Associates, Inc.	

The Greater New York Chapter would like to take this opportunity to thank all the companies, agencies and individuals who have generously contributed to WTS-GNY and supported our programs and services. We look forward to your continued support in 2014.

COVER ART: logo created by Sue Labouvie in 2011, altered for 2013 based on original design

AWARDS

Woman of the Year

Helena E. Williams, an attorney and experienced transportation executive, was appointed president of MTA Long Island Rail Road (LIRR) on June 18, 2007, as the first woman to lead the nation's largest commuter railroad.



Williams has won high marks for improving customer communication, driving down costs at the LIRR and moving ahead with modernization projects that will benefit customers via better on-time performance and service reliability. She has recently overseen a reorganization of key LIRR departments and functions as part of a MTA-wide effort to bolster efficiency.

Williams' priorities for the LIRR include a focus on customer safety, security and service reliability while laying the groundwork for meeting future transportation demands including preparing the agency for new service to Grand Central Terminal (GCT). **Williams** refers to the \$7 billion East Side Access project to connect to GCT as the LIRR's "moon shot" because it will result in the most significant increase in LIRR service in 100 years.

Williams' appointment as LIRR president followed a distinguished career in public service, including terms as president of MTA Long Island Bus and later as Nassau County deputy county executive.

Williams holds a J.D. from St. John's University School of Law and is admitted to practice law in New York. She has a B.A. with honors from the State University of New York at Oneonta.

Lifetime Achievement

Catherine Sweeney recently retired after nearly 40 years in public service. For the last 25 years, she served at the MTA Bridges and Tunnels. She retired from the

position of vice president, Staff Services/ chief of staff. In this role, **Sweeney** was charged with managing external affairs, human resources and administration for the largest bridge and tunnel toll agency nationwide. As chief of staff, she assisted the president; coordinated and anticipated issues and interdepartmental efforts; resolved problems; mediated disputes; acted as internal customer advocate; and served as a liaison to MTA headquarters. **Sweeney** introduced E-ZPass to New York City and created large successful public events.

Before joining the MTA, **Sweeney** served as manager of Trans-Hudson Communications at the Port Authority of NY and NJ (PANY&NJ). She directed public engagements to shape and build support for a billion-dollar Trans-Hudson capital program, including bridge, tunnel and PATH improvements, TRANSCOM and Transit Center and the return of the Hoboken ferry. **Sweeney** also created the first Trans-Hudson Transit Guide. Previously, she held senior positions in New Jersey government.

Sweeney also is involved in a number of professional and non-profit associations. She is a founding member of WTS-GNY, where she has served as the first treasurer and Newsletter Committee chair.

Member of the Year

Julia Kerson has served as the WTS-GNY treasurer for the last three years. In this capacity, **Julia** is responsible for the chapter's funds, securities and contracts. She performs many of the "behind-the-scenes" duties that are necessary for WTS-GNY to function. Her excellent organizational, leadership and communication skills are integral to each and every aspect of the chapter.



Catherine Sweeney

Julia was an early member of the Young Professionals Committee and has encouraged many women to take leadership roles.



Julia Kerson

She has incredible enthusiasm, which helps build the confidence of those who are new to the industry and boosts leadership involvement. **Julia's** passion for the transportation industry extends beyond WTS, as she has also served on the Young Professionals in Transportation (YPT) New York Chapter since its inception in 2011. Through 2011 and 2012, **Julia** served as the Programs co-chair. She planned networking and professional development opportunities to learn from industry leaders; tours of iconic transportation facilities; and networking with transportation peers. **Julia** has been a key player in growing the chapter by providing quality programming for the region's young professionals.

Rosa Parks Diversity Leadership Award

Most of **Flora Ramos'** 30-year career in the construction industry has been dedicated to promoting minorities. She represents Tishman Construction at community and



Flora Ramos

industry events to introduce and attract M/W/DBE firms. **Flora** arranges and participates in job fairs to hire minority individuals and companies from underrepresented populations on Tishman projects. She ensures that Tishman's projects include a balance of minorities, exceeding established goals wherever possible; that the minorities are equitably compensated and treated; and that the documentation is prompt and valid. **Flora**

continued on page 9

PROGRAM HIGHLIGHTS

The programs in 2013 focused on the transportation industry's need to adapt to a changing world and to confront the major problems facing the nation: the lingering impacts of recession, population growth, traffic congestion, global warming and preparing for natural disasters. Sustainability and resiliency were current themes. Also, to meet members' needs, WTS-GNY offered

several jobs skills and entrepreneurial workshops. In addition, the Chapter sought to expand its Transportation YOU program.

WTS-GNY also continued its efforts to increase its New Jersey presence by holding several meetings in the state.

The following is a summary of the variety of topics and fascinating speakers at our 2013 programs.

JANUARY

33rd Annual Awards Program and 16th Annual M/W/DBE Expo

Keynote Speakers

Helena Williams, LIRR President
James Weinstein, NJ Transit Executive Director

Finding Personal and Professional Satisfaction Workshop

Speakers

Deidre Taylor, NYCT Dept. of Subways, General Superintendent, Stations Environment
Deborah Howes, AECOM Director of Community Planning for Northeast Transportation Division



2013 Member of the Year Julia Kerson.



The Innovative Transport Solutions Award was given to the joint venture of NYCT Dept. of Buses and MTA Bus, Cambridge Systematics and OpenPlans for MTA Bus Time. From left: Jeff Maki, OpenPlans; Jennifer Strasser, Cambridge Systematics; Darryl Irick, NYCT Department of Buses; Craig Ciripriano, MTA Bus/LI BUS; and WTS-GNY President Mary K. Murphy.



From left: Amy Peterson, president of the Nontraditional Employment for Women (NEW), presented the Rosa Parks Diversity Leadership Award to Flora Ramos of Tishman Construction Corp.

MARCH

Transportation Trivia Night III

Small Business Success Stories Entrepreneurship Workshop

Speaker

Kim Haas, Haas Media LLC President

Public-Private Partnerships: Moving NJ Transportation Forward

Speakers

Deborah Brown-Davis, Strategic Team Leader for FHWA's Office of Innovative Program Delivery
Jeffery Parker, Strategic Team Leader, Senior Director, Ernst & Young Infrastructure
Peter Garino, Chief of Capital Programming and Administration, NJT
Victoria Kelly, Vice President and Northeast Region Strategic Operations Manager, Parsons Brinckerhoff



VHB received the Employer of the Year Award. From left: Susan O'Donnell; Janet Sharkey; Bob Dennison; Lisa DiTaranti; Marty Taub; Ruth Bonsignore; Colin Foley; Emmanuelle Humblet; and Lauren Wang.



From left: NJT Executive Director James Weinstein; WTS-GNY Programs (NY) Co-Chair Elizabeth Hynes; LIRR President Helena Williams.



The Personal and Professional Satisfaction workshop in January. From left: Deidre Taylor, a general superintendent NYCT's Stations Environment division; Deborah Howes, a director of Community Planning for AECOM; and WTS-GNY Vice President (NY) Linda Travis.



The Small Business workshop in March. From left: WTS-GNY Programs (NY) Co-Chair Elizabeth Hynes; Kim Haas, Haas Media president, WTS-GNY Vice President (NY) Linda Travis.



The Public-Private Partnership panel discussion in March. From left: WTS-GNY Programs (NJ) Chair Polina Knaster; WTS-GNY President Mary K. Murphy; Peter J. Garino, NJ Transit (NJT); Victoria Cross Kelly, Parsons Brinckerhoff; Jeffrey Parker, Ernst & Young Infrastructure; Deborah Brown-Davis, FHWA; WTS-GNY Vice President (NJ) Beth DeAngelo.

MAY

Freight Resiliency Planning

Speakers

Rick Larrabee, PANY&NJ Director of Port Commerce

Stacey D. Hodge, NYCDOT Director of Freight Mobility

Rick Crawford, Norfolk Southern Corp. Director of Public Projects

Anne Strauss-Wieder, Principal, A. Strauss-Wieder, Inc.

Transportation YOU Barclays Center Tour

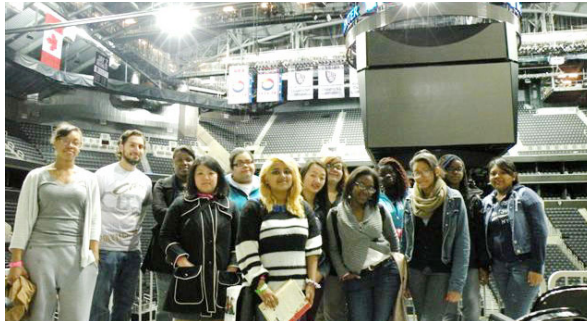
Speakers

Anita Miller, MTA Headquarters

Taylor Reiss, NYCDOT

Bavan Nandakumar, Barclays Center Traffic Manager

Terence Kelly, Barclays Center Community Affairs Manager



Transportation YOU students, who hailed from Brooklyn's City Polytechnic High School of Engineering, Architecture, and Technology, enjoyed their tour of the Barclays Center in May.



From left: WTS-GNY Transportation YOU Co-Chair Nicole Bucich; WTS-GNY President Mary K. Murphy; and WTS-GNY Transportation YOU Co-Chair Deborah Hyman at the Spring Fling in June.

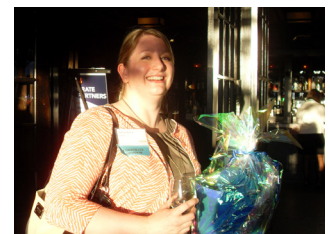
JUNE

Spring Fling Membership Drive

Summer Solstice Happy Hour



WTS-GNY members taking a walking tour of the High Line at the Spring Fling.



WTS-GNY Corporate Relations Committee member Alicia Rowe was the lucky raffle winner at the Spring Fling. The raffle benefited the Scholarship Fund.

JULY

3rd Annual "Take Me Out to the Ballgame" Membership Appreciation Night



From left: WTS-GNY NJ Programs Committee members Meghan Myers and Colleen O'Neil; WTS-GNY Vice President (NJ) Beth DeAngelo at the Summer Solstice Happy Hour.



From left: Rosanna Collars, Arup; Olu Akele and Patty Bookh, both of Maser Consulting; and Brian Short at the Summer Solstice Happy Hour.



From left: WTS-GNY NJ Programs Committee member Pat Malleus Roma; Dan LaMunyon, Maser Consulting; Lynn LaMunyon, Maser Consulting; Johanna Heine, NJ Transit; and Benjamin Freid, Amtrak at the Summer Solstice Happy Hour.



Membership Appreciation Night in July. From left: WTS-GNY Young Professionals Committee member Leah Flax; Marilyn Shazor, FTA Region 2 administrator; WTS-GNY Director-At-Large Ella McLeod; Laura Azziz-Singh, NYCT; Ramona Dinkins-Pryce, NYCT; Deborah Chin, NYCT; Elizabeth Paul, NYCT; WTS-GNY Vice President (NY) Linda Travis; Taylor Reiss, NYCDOT; and WTS-GNY Special Events Committee member Juliet Williams.



From left: Kavita Dave, Kirstin Leiendecker and Lyly Lau, all of Parsons Brinckerhoff; and Hannah Cheng, NJDOT at the Summer Solstice Happy Hour.

PROGRAM HIGHLIGHTS

SEPTEMBER

**Pulaski Skyway Rehabilitation:
Project Challenges and Innovative
Solutions**

Speakers

James Simpson, NJDOT
Commissioner

**Laine Rankin, NJDOT Program
Manager**

**Lynn Middleton, NJDOT Project
Manager**

**Veronica Murphy, NJDOT Principal
Planner**

**Anthony DeJohn, Parsons
Brinckerhoff Northeast Planning
and Environmental Manager**



From left: WTS-GNY President Mary K. Murphy; NJDOT Commissioner James Simpson; Laine Rankin, NJDOT at the Pulaski Skyway Rehabilitation program in September.



From left: WTS-GNY Vice President (NJ) Beth DeAngelo; WTS-GNY President Mary K. Murphy; Antony DeJohn, Parsons Brinckerhoff; Veronica Murphy, NJDOT; Lynn Middleton, NJDOT; Laine Rankin, NJDOT; WTS-GNY Programs Committee (NJ) Chair Polina Knaster at the Pulaski Skyway Rehabilitation program in September.

OCTOBER

Annual Gala Cocktail Reception

NOVEMBER

**Safety First: NJ Initiatives,
Engineering Projects and
Programs**

Speakers

Caroline S. Trueman, FHWA NJ
Highway Safety Engineer

Veronique "Ronnie" Hakim, NJ
Turnpike Authority Executive
Director

Mary K. Murphy, WTS-GNY
President and Executive Director of
the North Jersey Planning Authority
(NJTPA)

Elise Bremer-Nei, NJDOT Bureau
of Commuter Mobility Supervising
Planner



The November Safety First program in New Jersey. From left: Caroline Trueman, FHWA; Elise Bremer-Nei, NJDOT; WTS-GNY President Mary K. Murphy; NJ Turnpike Authority Executive Director Ronnie Hakim; WTS-GNY Programs Committee (NJ) Chair Polina Knaster; WTS-GNY Vice President (NJ) Beth DeAngelo.



Holiday Party in December. From left: WTS-GNY President Mary K. Murphy; longtime WTS-GNY mentor Carl Selinger; WTS-GNY Membership Committee member Emily Gallo.

DECEMBER

**Holiday Party at Trinity Place in
Lower Manhattan**



Holiday Party in December. From left: WTS-GNY Director-At-Large Ella McLeod; WTS-GNY Vice President (NY) Linda Travis; WTS-GNY President Mary K. Murphy; WTS-GNY Vice President (NJ) Beth DeAngelo.



Holiday Party in December. From left: WTS-GNY Advisory Board member Jenny Kapelyan; WTS-GNY Treasurer Julia Kerson; and Jennifer Thompson, Parsons Brinckerhoff.



Holiday Party in December. From left: WTS-GNY Special Events Committee Co-Chair Lisa Pompei and Harry Tom, Jacobs.



Holiday Party in December. From left: Special Events Committee members Yvette Janniere-Houlder and Jacqueline Woodley.



Holiday Party in December. From left: WTS-GNY Mentoring Committee Co-Chair Malinda Foy; WTS-GNY Newsletter Committee Chair Daniella Bernett; Immediate Past President Marcia Shapiro; Lisa DiTaranti, VHB; WTS-GNY Programs (NY) Committee Co-Chair Elizabeth Hynes.

2013 ANNUAL GALA COCKTAIL RECEPTION

As Grand Central Terminal (GCT) celebrated its 100th anniversary in 2013, it graciously deigned to share the limelight with WTS-GNY when the chapter hosted its prestigious Annual Cocktail Reception Gala at Michael Jordan's Restaurant on October 17th. Transportation industry leaders from around the region gathered in this elegant space overlooking the Beaux Arts magnificence of Vanderbilt Hall – with its glistening marble floors, double staircase modeled after the Paris Opera House and its vaulted Sky Ceiling featuring zodiac constellations – to

honor LIRR President Helena Williams as the 2013 Woman of the Year and the chapter's two scholarship winners. In addition, WTS-GNY bestowed its Lifetime Achievement Award on Catherine Sweeney, who retired after nearly 40 years of



From left: NYSDOT Commissioner Joan McDonald; Woman of the Year Helena Williams; WTS-GNY President Mary K. Murphy and scholarship winners Smita Sharma and Jessie Yang.



From left: WTS-GNY Vice President (NY) Linda Travis; Lifetime Achievement Award recipient Catherine Sweeney; WTS-GNY Advisory Board member Deborah Wathen Finn; WTS-GNY President Mary K. Murphy.

Hakim, MTA COO Nuria Fernandez, MTA Capital Construction President Michael Horodniceanu and former MTA director of Administration Linda Kleinbaum were also on hand to help the chapter present these honors.

[Editor's Note: In December, Fernandez stepped down from the MTA to become the general manager at the Santa Clara Valley Transportation Authority in California.] ■

public service, the last 25 of which had been at MTA Bridges and Tunnels.

WTS-GNY was pleased to welcome NYSDOT Commissioner Joan McDonald as a special guest host. McDonald was the 2011 Woman of the Year and came to extend her congratulations to Williams and Sweeney. NJDOT Commissioner James Simpson; NJ Turnpike Authority Executive Director Veronique

FRIENDS OF WTS-GNY

Our sincere thanks to the following organizations that provided in-kind services for the 2013 Annual Cocktail Reception.

AECOM

AKRF

ARUP

Barbara Thayer Associates

CH2M Hill

Frasca and Associates LLC

General Contractors Association

Gilbert Tweed Associates

HDR

Marine Tiger Technologies

Michael Baker Engineering, Inc.

Parsons Brinckerhoff

Parsons

Rudin Center

Sam Schwartz Engineering

STV, Inc.

URS Corporation

WTS would like to thank the Special Events Committee overseen by WTS-GNY Director-at-Large Ella McLeod, Vice President (NY) Linda Travis, and co-chairs Sharija Mason and Lisa Pompei, and members Daniella Bernett, Wilhemina Brown, Desiree Fumento, Camille Gordon-Taylor, Yvette Janniere-Houlder, Dekka Michael, Jada Parker, Amy Verel, Juliet Williams and Jacqueline Woodley. Our thanks also go out to all those who donated items to the Silent Auction, which combined with monetary contributions, raised \$2,863 for the Scholarship Fund.



From left: NJDOT Commissioner James Simpson; Woman of the Year Helena Williams; former MTA COO Nuria Fernandez.



From left: WTS-GNY Advisory Board member Porie Saikia-Eapen; MTA Capital Construction President Michael Horodniceanu; and WTS-GNY Immediate Past President Marcia Shapiro.



From left: Tom Klin and David Strong, both of CH2M Hill and Jerry Harrison, Parsons.



From left: Former MTA deputy director of Administration Linda Kleinbaum and NJ Turnpike Authority Executive Director Veronique Hakim.

COMMITTEE REPORTS

Mentoring Program

The 2013 WTS-GNY Mentor program began with over 30 applications for 10 apprentice positions, and concluded with graduation on December 9th at New York City Transit. This year's graduation speaker was 2012 Woman of the Year Sue Baer.

At the end of the 10-month program, the apprentices had set and tracked three goals; made presentations to the group; and participated in open discussions with women who've made it to the top and thrived in what has traditionally been a male-dominated environment. The apprentices found their mentors through a speed-matching exercise, allowing them to get to know, and learn from, each of the mentors. Throughout the year, the members of the group shared job updates, personal struggles, and career challenges. They also participated in workshops focused on a wide range of topics including the use of social media in the professional world; successful job transitions by other WTS members; and work-life balance.

WTS-GNY has now graduated more than 100 apprentices who are strengthening the transportation community in Greater New York. Congratulations to this year's apprentices and deep thanks to those who have so generously mentored.

If you are interested in learning more about the mentoring program, please contact Nina Harvey (nina.harvey@arup.com) or Malinda Foy (mfoy@mtahq.org).

2013 Mentoring Program

APPRENTICES

Cindi Davidson
Eve Glazer
Swena Gulati
Jennifer Fogliano
Jenifer Kandel
Shajira Mason
Dawn Miller
Taylor Reiss
Sandra Rothbard
Sarah Steib

MENTORS

Peter Aviles
Deborah Chin
Lisa DiTaranti
Victoria Kelly
Naomi Klein
Sarah Rios
Ruby Siegel
Patrick Smith
Michael Soliman
Harry Tom

Transportation YOU

Transportation YOU is a hands-on, interactive, mentoring program that offers young girls ages 13-18 an introduction to a wide variety of transportation careers. Through the program, we work to make a difference in the lives of young girls by offering programs and activities that will spark their interest in all modes of transportation and encourage them to take courses in math, science, and technology, which are the stepping stones to exciting

careers that can change the face of the transportation industry.

The WTS-GNY Transportation YOU program began its third year with a great turn out at the September meet-and-greet at City Polytechnic High School. Nearly 20 girls attended, including several alumni from the previous year's program! In October, the girls attended a kick-off event at Parsons Brinckerhoff's New York office, where mentors and mentees were paired off and conducted fun group bonding exercises. The November event was a tour of the World Trade Center site led by PANYNJ staff. The girls wore hard hats and safety goggles, and received a behind-the-scenes tour of the One World Trade Center and WTC Transportation Hub construction sites. In December, the girls participated in a "Shadow Your Mentor Day," in which they were paired with WTS mentors at their home offices and were given the opportunity to experience daily transportation career events. The WTS-GNY January Annual Meeting is a highlight for the girls. At this event, they are given the opportunity to meet and hear from influential transportation leaders and enjoy the night's festivities!

Scholarship Committee

The Scholarship Committee would like to take the opportunity to shed the spotlight on this year's winners. It is rewarding for WTS to see that our scholarship awards are providing the financial support to advance Women in Transportation.

2013 Leonard Braun Memorial Graduate Scholarships

Ci 'Jessie' Yang is a Ph.D. student in Civil and Environmental Engineering at Rutgers University, specializing in transporta-



tion. She received her master of science in Environmental Engineering from Texas A & M University, Kingsville, and bachelor of science in Environmental Science from People's University of China. Yang is currently working with GPS

data from taxis in New York City to study travel demand and mode choice. The results of this work will be useful to improve travelers' experiences and improve transportation forecasting and planning. While in China, Yang was actively involved in efforts to educate the Chinese about public transportation problems associated with the environment, including traffic congestion, parking difficulties, and pollution caused by vehicular emissions. Yang was awarded a Rutgers School of Engineering Fellowship in 2010 and 2011, and she won the Student Poster Competition at the 2013 ITE Northeastern District Annual Meeting for her work on taxi demand modeling. After graduation, Yang plans to become a transportation researcher to help design an intelligent, efficient and sustainable transportation system worldwide.

Smita Sharma received her bachelor of technology in Civil Engineering with honors from Pant University, India, and her master's in Transportation Engineering from Arizona State University (ASU) specializing in Pavement Materials and Design. Smita's outstanding research efforts were awarded with a graduate fellowship and a graduate research grant at ASU and she is currently pursuing her research at the State University of New York (SUNY), Albany. At SUNY, she is working towards a Ph.D. in Information Science and a master's in Transportation Planning specializing in Geographic Information Systems and its applications in public transportation. Apart from research, she enjoys traveling, music and spending time with her four-year-old daughter. After graduation, Smita will continue pursuing research in the field of transportation planning/engineering and sustainability.



Programs and Professional Development

The NY Programs Committee kicked off 2013 with its 33rd Annual Meeting and 16th annual W/M/DBE Expo at Club 101. The program included the chapter's annual awards ceremony and featured two keynote speakers, NJ Transit Executive Director James Weinstein and Long Island Rail Road President Helena Williams, both of whom focused on their agencies' responses to Superstorm Sandy. A May dinner program continued the resiliency theme, but from the freight transport perspective. The panel for the "Freight Resiliency Planning" event included NYCDOT Director of Freight Mobility Stacey Hodge, Norfolk Southern Director of Public Projects Rick Crawford, and PANY&NJ Director of Port Commerce Rick Larrabee, and was moderated by freight expert Anne Strauss-Wieder.

In addition to the Club 101 dinner programs, the committee also continued its series of job skills workshops targeted towards mid-career transportation professionals that was instituted in 2012. The "Finding Personal and Professional Satisfaction" workshop featured a roundtable discussion on work-life balance. A second workshop focused on entrepreneurship. The NJ Programs Committee also was very active. Among its programs were panel discussions on the "Public-Private Partnerships – Moving NJ Transportation Forward"; "Pulaski Skyway Rehabilitation: Project's and Innovative Solutions"; and the second installment in a series on transportation safety initiatives.

Young Professionals

2013 brought with it the fourth annual Transportation Trivia event organized in conjunction with the American Planning Association and Young Professionals Transportation. Once again,

the event was a resounding success and we hope to continue to partner with these organizations as we move forward in our efforts to engage and encourage young women in transportation. After four years, the Young Professionals Committee has seen an increase in the number of young WTS-GNY members and, more importantly, has seen those women continue on to be more engaged in the organization as a whole. We look forward to continuing to provide a space for young women to network, learn from one another, and discuss the unique challenges they face in the workplace. ■

AWARDS

continued from page 3

has worked with city, state, and federal agencies to make certain that Tishman remains at the top of the "best performers" lists for all public-sector projects. She has provided countless contacts for both new and well-established minority firms, beyond Tishman, to promote their growth within the industry.

In addition, for over 10 years, Flora has worked with the ACE mentoring program and the local Explorer's group, to tout the industry to high school students interested in careers in design and construction.

Employer of the Year

VHB has always recognized that its people are the key to its success as a company. This quest is an integral part of its Generational Company philosophy, in which great business performance and a focus on its people are given equal attention.

VHB takes pride in its role as a corporate citizen. The firm's employees strive to improve the quality of life in our neighborhoods. VHB also provides financial support to those organizations in our communities that need it most. Over the last 30 years, it has raised over \$2 million for non-profit organizations. In addition, the firm seeks ways to help the VHB Family during times of need.

VHB provides creative design solutions to the challenges facing our urban, suburban, and rural surroundings. The bottom line at VHB is doing the right thing. VHB was the first engineering firm nationwide to join the Chicago Climate Exchange (CCX) and to commit to being carbon neutral. The firm instituted energy-efficiency and waste-reduction programs in all of its offices. VHB's employees are dedicated stewards of our industry as well, serving on numerous national committees, enhancing the state of our professional practice. VHB also is a proud supporter of WTS. ■

BUDGET REPORT

With total revenues of approximately \$132,000 in 2013, WTS-GNY saw a renewed commitment from the region in the advancement of women in the transportation industry. The organization's discount for public sector membership made WTS more accessible and resulted in a 22 percent increase in revenue from membership dues. Continuing to expand our

reach, WTS-GNY boosted its investment in programming in New Jersey and saw a 24 percent return.

Aside from investments in membership training, scholarships to the International conference and membership events, the chapter is working to increase the value of a WTS-GNY membership.

	2010	2011	2012	2013
Revenues				
Membership	\$11,805.00	\$17,610.00	\$12,674.50	\$15,535.00
Bank Interest	387.06	324.24	222.89	173.34
Monthly Programs and Workshops	31,850.00	22,238.66	17,343.00	21,898.47
Corporate Partners	78,000.00	60,500.00	79,500.00	65,250.00
Fundraising	28,055.00	28,790.00	25,610.50	29,988.00
W/M/DBE Expo	410.00	—	—	—
Total Revenue	\$150,507.06	\$129,462.90	\$135,350.89	\$132,844.81
Expenses				
President	945.21	785.54	118.40	625.00
Board Training	4,078.46	7,153.93	10,028.76	5,516.32
Treasurer (Bank Fees)	79.68	51.32	42.40	27.10
Credit Card Processing Fees	954.61	596.88	1,161.75	1,698.46
Secretary	177.01	—	—	—
Monthly Programs and Workshops	29,107.21	38,428.57	31,581.69	35,338.93
Membership (Events)	18,062.15	9,001.54	13,389.72	5,444.30
Diversity	407.97	447.46	—	—
Fundraising	43,916.60	42,243.15	36,653.57	49,256.23
Student Affairs (Transportation YOU)	—	—	6,284.87	6,352.74
Corporate Relations	446.46	338.56	248.89	183.33
Board Expenses*	3,401.32	2,636.87	4,326.48	4,487.24
Board Liability Insurance	900.00	900.00	900.00	900.00
Mentoring	2,700.96	6,165.38	2,672.38	2,928.60
Special Conferences	2,970.22	—	—	—
Newsletter (Annual Reports)	4,993.23	309.37	266.09	401.13
Photography	2,500.00	2,150.00	2,150.00	1,000.00
Professional Development	1,179.34	1,460.68	1,001.11	1,252.00
Young Professionals	1,407.37	596.63	1,122.86	1,279.47
Website/Database	3,750.00	—	—	—
Miscellaneous	526.00	—	—	—
International Conference Attendance Scholarship	1,003.00	4,243.02	2,942.15	2,303.23
Total Expenses	123,506.80	117,508.90	114,891.12	118,994.08
Money Raised for WTS Scholarship	6,335.00	4,534.90	2,823.00	4,712.00
Total Expenses including deposit to Scholarship Account	\$129,841.80	\$122,043.80	\$117,714.12	\$123,706.08
Net Revenue After Distributions				
	\$20,665.26	\$7,419.10	\$17,636.77	\$9,138.73
WTS Scholarship Fund Balance (December 2012)				
	\$35,371.61	—	—	—
WTS Scholarship Fund Balance (December 2013)				
	\$34,618.90	—	—	—

*Board Expenses including food at board meetings, conference call line, communications tools, and supplies

WTS-GNY Board of Directors 2012-2014

President

Mary K. Murphy
NJTPA
(973) 639-8401

Vice Presidents

Beth DeAngelo (NJ)
Parsons Brinckerhoff
(212) 465-5090
Linda Travis (NY)
Retired
(347) 694-1027

Treasurer

Julia Kerson
PANY&NJ
(201) 395-3956

Secretary

Stephanie Camay
Parsons Brinckerhoff
(212) 465-5178

Directors-At-Large

Rena Barta
Jacobs
(862) 242-7161
Maria DeLucia
Parsons Brinckerhoff
(212) 465-5366
Ella McLeod
MTA NYCT
(646) 252-3109
Sarah Kaufman
Rudin Center
(212) 998-7400

Immediate Past President

Marcia Shapiro
Marine Tiger Technologies
(646) 460-4947

WTS-GNY Committee Chairs 2013

Communications

Amy V. Kaufman
MTA NYCT
(646) 252-6821

Newsletter Subcommittee

Daniella Bernett
STV
(212) 614-7632

Corporate Relations

Janice Li
CH2M Hill
(908) 963-6420

Membership

Erica DeCrescenzo
NYCDOT
(212) 839-6965

Mentoring

Malinda Foy
MTA
(646) 252-5420
Nina Harvey
Arup
(212) 897-1554

Programs

Alexa Gangemi (NY)
CH2M Hill
(646) 253-8682
Elizabeth Hynes (NY)
Parsons
(212) 266-8393
Polina Knaster (NJ)
HDR
(862) 236-1746

Scholarship

Ellen Zielinski
DCAS
(212) 386-0586

Special Events

Lisa Pompei
Michael Baker
(914) 539-4731
Shajira Mason
Parsons Brinckerhoff
(212) 465-5183

Young Professionals

Julia Kerson
PANY&NJ
(201) 395-3956

Transportation YOU

Nicole Bucich
Parsons Brinckerhoff
(212) 465-5220
Deborah Hyman
MTA NYCT
(646) 252-2614

Recognitions

Marcia Shapiro
Marine Tiger Technologies
(646) 460-4947

WTS-GNY Advisory Board 2013

Richard Maitino, Chair

Parsons Corporation Group

Stephanie Pinson, Past Chair

Gilbert Tweed Associates, Inc.

Deborah Wathen Finn

The Wathen Group

Doreen Frasca

Frasca and Associates, LLC

Greg Kelly

Parsons Brinckerhoff

Sandra Lautenberg

Trueform

Anne Locke

AKRF

Anita Miller

MTA

Barbara Thayer

B. Thayer Associates

Laura Toole

Sam Schwartz Engineering

Martha Walther

MTA

Past Presidents

Felice Farber

General Contractors Association

L. Dédi Gongga

MTA NYC Transit

Jenny Kapelyan

Parsons Brinckerhoff

Marcia Shapiro

Marine Tiger Technologies

Pippa Woods

WTS International



Advancing Women in Transportation

Greater New York Chapter

P.O. Box 989

New York, NY 10116-0989