



2021 VOLUME 4

December 17, 2021

# HOT Chapter Newsletter



> Heart of Texas

Advancing women  
Advancing transportation

## IN THIS ISSUE

- President's Letter
- Agency Partner and Members-Only Event
- Recognitions

## BOARD MEMBERS

**PRESIDENT**  
**Ashley Williams**

Research Administrator  
Center for Transportation  
Research/UT Austin

**VICE PRESIDENT**  
**Tonia Norman**

Retired  
TxDOT

**SECRETARY**  
**Laura Friello, PE**

Project Manager  
Garver USA

**TREASURER**  
**Hong-Ting Chen**

Tolls Project Analyst  
Atkins

**IMMEDIATE PAST PRESIDENT**  
**Jackie Sartor**

Senior Marketing Coordinator  
Freese & Nichols



## PRESIDENT'S LETTER

It's hard to believe that we are already at the end of 2021! While this past year was not yet back to normal, I'm very proud of our success and adaptability as a chapter and look forward to our opportunities in 2022!

We ended another successful series of our monthly lunches. We had a conversation with Jacqueline Yaft about Austin-Bergstrom International Airport (AUS) and the future of AUS post-Covid; and James Bass, Executive Director for the CTRMA, talked about his vision for the agency. The Programs Committee has exciting plans for next year. Stay tuned for more info about that in the upcoming months.

In November we were able to hold our annual Corporate/Agency Partner and Members-Only Event. It was our first in-person event since February 2020! It was a night of celebration and a chance to see people we haven't seen in a long time!

As we head into the new year, we hope to move back to a more normal schedule. We are continuing with plans to be in-person as much as possible and will be updating everyone with more information soon. Now is a great time to get involved as we shape what our 2022 will look like! Please reach out to the individual committee chairs, or anyone on the executive board, and we will get you connected!

In closing, I wish each of you a wonderful holiday season and an amazing new year. I am looking forward to seeing everyone in person next year!

Happiness and health to you all!

All the best!

Ashley Williams



# COMMITTEE CHAIRS

## COMMUNICATIONS Cheryl Goodgame

Senior Marketing Coordinator  
Lockwood, Andrews, & Newnam,  
Inc.

## CORPORATE PARTNERSHIP Janelle Carey

Transportation Planner  
HNTB

## GALA CHAIR Brittani Kaim

Communications Marketing  
Manager, WSP USA

## MEMBERSHIP CHAIR Yvonne Garcia Thomas, PE

Manager of Geotechnical  
Engineering, Raba Kistner

## MENTORING CHAIR Sylvia Shelton

Communications Manager  
CTRMA

## PROFESSIONAL DEVELOPMENT Heidi Corcoran

Mobility and Innovation Strategist  
Milligan Partners, LLC

## PROGRAMS CHAIR Patty Trujillo, PE, MCE

Transportation Engineer  
Atkins

## RECOGNITIONS CHAIR Kat Streff

Assistant Project Manager  
Kleinfelder

## REGIONAL COUNCIL Lisa Loftus-Otway

Research Scientist  
Center for Transportation Research  
UT Austin

## SCHOLARSHIP CHAIR Adeliza Ramirez, PE

Engineer  
Volkert, Inc.

## STUDENT LIAISON CHAIR Jamie Byers

Graduate Student  
UT Austin, Civil Engineering

## TRANSPORTATION YOU CHAIR Mary Jo Galindo

Senior Archaeologist  
Galindo Environmental Consulting,  
LLC



# CORPORATE SPONSORSHIP SPOTLIGHT



Chelsey Cooper, ATG

Chelsey Cooper, AICP recently joined ATG as Assistant Director of Planning and has participated in WTS events in Texas and California.



She cites being actively involved in these great learning and networking opportunities as an instrumental part in continuing her path towards achieving the goals she’s set both professionally and personally. As a Transportation Planner, Chelsey has worked on a variety of projects across the nation, including long-range and regional planning, multimodal and mobility plans, safety plans and transit studies.

When asked where she looks for inspiration she said, “I find the most inspiration in young planners. Those who enter the Planning profession have such a strong desire to make a positive impact on the world. Recent graduates and those individuals in the early years of their career have such a passion for creating better spaces and communities that they are constantly looking for innovative solutions. Working with them to capture these ideas and find implementable solutions as we help plan their future community brings planning full circle.”

We are proud of the work and dedication Chelsey has shown at her time so far at ATG. We look forward to her continuing to grow alongside our company and reach more individuals and communities in the coming years.



Lizette Saenz, Jacobs

## Jacobs

Lizette Saenz is an engineer in training with four years of highway design experience at both the schematic and PS&E level. She is currently serving as the primary design lead for the FM 1252 PS&E design effort. The FM 1252 re-alignment is part of the larger I-20/SH 31 interchange project for the TxDOT Tyler District. Lizette’s primary role is to coordinate the design effort between the various

disciplines (roadway, drainage, structures, traffic, etc.). She is also assisting with the traffic control plan for the four-level interchange.

Lizette was one of the primary roadway designers during the schematic development of the IH-20/SH 31 interchange as well as the IH-20 schematic through Gregg County, TX. While working on these complex projects, she became proficient with TxDOT and FHWA design criteria and in the use of the OpenRoads design software. She also played a key role in the development of the construction cost estimates.

Lizette is an active member of the WTS Heart of Texas Chapter and is currently a mentee in the 2021 Mentorship Program. She currently serves as secretary for the Austin branch of the Society of Hispanic Engineers (SHPE) as well as the planning committee for the SHPE National Conference. Lizette is an active member of the Jacobs Women’s Network (JWN) and she is also a UT talent recruiter for Jacobs.

Lizette has passed the PE exam and will be a Professional Engineer in early 2022.



Angel-Lina Soutdarany P.E., Atkins

WTS HOT Chapter and Programs Committee member Angel-Lina Soutdarany is a senior project manager in the Atkins Austin office. Lina has over 20 years of consulting experience specializing in the transportation engineering industry. She has worked in both the DFW and Austin areas throughout her career managing projects for TxDOT and for county and city agencies. Currently, Lina works for the Community & Intermodal Infrastructure Business Unit at Atkins; she also manages clients for both Williamson County and the City of Austin. Working on projects for local municipalities has afforded her the opportunity to coordinate and engage with local citizens and stakeholders.



In addition, Lina’s passion for the promotion of women in the engineering field has inspired her to lead the local Women Inspiring Leadership (WIL) group in the Atkins Austin office. The purpose of WIL is to promote women in leadership roles, mentor young females to enhance their career progression, and to increase the retention of female employees by facilitating support by other female coworkers.

Lastly, for the last several years, Lina has also volunteered at local elementary schools during Engineering Week to introduce children to the world of Civil Engineering.



**BSG Overview:**

Engineers, planners, scientists and surveyors - we are BGE. Whether in the office or out on the job, the women of BGE are driven to ensure our solutions endure for generations. The most important element of the projects we undertake is the people our projects serve. Community is at the heart of our mission.

As our neighborhoods grow, so do our infrastructure needs and challenges. Maintaining and improving this critical foundation is essential in building economic strength and accommodating a rising population. BGE’s goal is to make tomorrow better than today for our clients, communities and future leaders. We strive to inspire future generations of women to explore the possibilities in the engineering field along the way.

**Spotlights:**



**Niki Lambrou, P.E., CFM:** WTS HOT Chapter Member since 2018, Niki Lambrou, is an assistant project manager located in BGE’s South Austin office. Since joining BGE in 2017, Niki has become an instrumental team leader for hydrologic and hydraulic design for a wide range of transportation projects. Most recently, she has served as a hydraulics engineer on the City of Austin’s South Lamar Boulevard Corridor Project and Travis County’s South Pleasant Valley Road Project.

Niki is a strong advocate for women pursuing future careers in STEM. She previously served as a Transportation YOU mentor and was on the WTS National Transportation YOU DC Summit committee. Throughout the pandemic, Niki served as the BGE Central Texas social committee chair, creating ways to keep employees connected and engaged. She also recently achieved a career milestone by obtaining her P.E. License and CFM certification.



**Tricia Mosier:** Tricia Mosier is BGE’s director of environmental services in Central Texas and a principal in the firm. Beginning her career in the TxDOT Bryan District, she has over 25 years of experience in the transportation industry. She has worked on projects in 19 of the 25 TxDOT districts, and for toll authorities and municipalities across the state. Tricia serves her clients by navigating the regulatory requirements for the unique environment in Central Texas.

As a dedicated leader, Tricia focuses on serving the surrounding communities while always looking for the next innovative compliance solution. She contributed some of these cutting-edge solutions to the Cambria Cave project in Williamson County, which was awarded the 2020 gold medal and Eminent Conceptor for the ACEC Texas Engineering Excellence Awards. As a member of the WTS HOT Chapter since 2010, Tricia prides herself on being involved in organizations that seek to contribute to the advancement of women in STEM.



# HNTB

## BUILDING A STRONGER FUTURE

### HNTB's Austin Women in Leadership: Delivering Extraordinary Value



HILLARY  
CALAVITTA

"A leader is best when people barely know he exists, when his work is done, his aim fulfilled, they will say: we did it ourselves." – Lao Tzu



SARAH  
CALFEE

"Leadership is not about being in charge. Leadership is about taking care of those in your charge." – Simon Sinek



MARIA  
CASTANON

"Leadership to me means supporting others to make them more effective, taking ownership of something, and not being afraid to make the wrong decision."



JENNIFER  
DONOVAN

"Take time to have fun and seize opportunities to make memories, because lost time is never found again."



CHRISTEN  
ESCHBERGER

"My favorite aspect of leadership is coaching and developing others, encouraging them to reach their full potential."



CRYSTAL  
HANSEN

"A true leader has the confidence to stand alone, the courage to make tough decisions, and the compassion to listen to the needs of others." – Douglas MacArthur



DEEANNE  
HEATH

"The greatest gift of being a leader is the ability to guide and empower other women to soar in whatever they do. Lead by example, not just words."



CATHERINE  
HEJL

"Accept challenging assignments, even if you are scared. Look at them as an opportunity to shine."



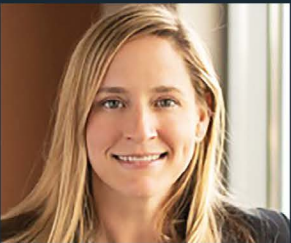
SUMMER  
LAWTON

"Find the courage to create your own happiness and share it with others. The light of your joy will be reflected and burn even brighter."



LORETTA  
SCHIETINGER

"When I started at HNTB, my mentors were all men (and all fantastic). 30 years later, I'm proud that young professionals have both men and women as mentors in our organization's leadership."



KATE  
WILDER

"Leadership is a combination of contributing to and celebrating the success of my fellow women in leadership roles as well as doing my part to help develop our future leaders."



LINDSAY  
WOOD

"At a time when the pressures of working, parenting (in some cases, homeschooling), and running a household intersect and overlap more than ever, it is critical to have leaders that understand the challenges many people are facing."



SHANDRIAN  
UGWUOKE

"It means a lot be able to develop others and to help shape the future of our industry."



The HNTB Companies  
Infrastructure Solutions  
hntb.com





## 2021 WTS HOT CHAPTER CORPORATE/AGENCY PARTNER AND MEMBERS-ONLY EVENT

The WTS HOT Chapter hosted our annual Corporate/Agency Partner and Members-Only event on November 18, 2021, at Hank’s. After more than a year apart, it was the Chapter’s first in-person event in celebration of all that our Corporate and Agency Partners do every year to support the WTS mission of advancing women in transportation. The event was a great success, with many of our partners and members coming together and enjoying the chance to see people we haven’t seen in too long.

The HOT Chapter is thankful for the many firms and agencies who proudly serve as partners, supporting our mission. This chapter uses donated funds to sustain and expand the Chapter’s professional development programs, provide industry recognition of women in transportation, advance the mentoring program, and, of course, provide needed scholarships for women entering the transportation industry.

Over the past year, many WTS members have elevated their career and helped deliver mobility improvements that have improved the quality of life for many – bravo! Thank you to our Corporate and Agency Partners and active members for ‘lighting a path’ for all women entering the transportation industry. Your continued participation at networking events like the November 2021 Corporate Sponsor and Agency Partner Night is critical to our ability to work together to improve mobility. The WTS HOT Chapter is looking forward to future opportunities in 2022 to host events that engage WTS members and promote their personal and professional success. Onward to 2022!







OCTOBER LUNCHEON

Jacqueline Yaft, Chief Executive Officer of Aviation, City of Austin City’s Department of Aviation

In October, the chapter hosted Jacqueline again as our virtual lunch speaker. She presented on the economic impact of the airport in Central Texas and the impacts of COVID-19 on the airport’s activities. Jacqueline mentioned that Austin-Bergstrum International Airport’s capacity recovered more quickly than did most other Texas airports. She also provided an update on the current projects at the airport going forward.

Jacqueline joined AUS in 2019 and is responsible for the City’s Department of Aviation. She has over 20 years of experience at some of the largest hub airports in the U.S., including the Los Angeles World Airports, Denver International Airport, and JFK International Airport.



NOVEMEBER LUNCHEON

James Bass, Executive Director, Central Texas Regional Mobility Authority

James Bass was our last, but not least, speaker of the 2021 lunch events. He presented a look at yesterday, today, and tomorrow of the Central Texas Regional Mobility Authority. He discussed his new role and where he sees the agency going forward.

James was named Executive Director of the Central Texas Regional Mobility Authority on January 27, 2021. He began his new duties upon the conclusion of Texas’ 87th Legislative session (June 2021). Previously, he served as Executive Director of the Texas Department of Transportation (appointed in 2016).

REGONITIONS

We closed the call for nominations on December 3, 2021. Thank you to all who took the time to submit a nomination to recognize the hard work of individuals and companies in our community.

We will open voting to members only from December 20th to January 7th. Only WTS member votes will be counted, so please do not forward the link for votes to additional individuals. We will announce the award winners at the 2022 gala.

2021

chapter  
recognition awards

nominations are  
now being accepted

member of the year • woman of the year • honorable Ray LaHood  
(man of the year) • employer of the year • Rosa Parks diversity  
leadership award • innovative transportation solutions award

## 2021 CORPORATE & AGENCY PARTNERS

### Platinum

**AECOM**

**ATG** ALLIANCE  
TRANSPORTATION GROUP

**ATKINS**  
Member of the SNC-Lavalin Group

**BURNS  
MCDONNELL**

**HDR**

**HNTB**

**Jacobs**

**LJA**  
LJA ENGINEERING

**WSP**

Gold

**Bowman**

**GARVER**

**LOCHNER**

### Silver

**AmaTerra**  
ENVIRONMENTAL, INC.



AMERICAN  
**STRUCTUREPOINT**  
INC.

**BGE**

**CDM  
Smith**

**CobbFendley**

**CP&Y**

**FREESE  
AND  
NICHOLS**

**HVJ**  
ASSOCIATES

**K·FRIESE  
+ ASSOCIATES**  
PUBLIC PROJECT ENGINEERING

**Kimley»Horn**  
Expect More. Experience Better.

**KLEINFELDER**  
Bright People. Right Solutions.

**mwm**  
Design Group

**N NELSON  
NYGAARD**

**RABA  
KISTNER**

**THE RIOS GROUP**

**RK&K**  
Responsive People | Creative Solutions

**SAM**

**Stantec**

**Ulteig** We listen. We solve.®

### Bronze

**CAMBRIDGE  
SYSTEMATICS**



COX | McLAIN  
Environmental Consulting

**DKS**

**FORESIGHT**  
PLANNING & ENGINEERING SERVICES, LLC

**Gorron dona &  
Associates, Inc.**

**RPS**

**RS&H**

**TENCATE**  
GEOSYNTHETICS

**Terracon**

### DBE



**Galindo  
Environmental  
Consulting**

**Nancy Ledbetter & Associates**  
public outreach • planning • communications

### Agency Partners

**COMPO**  
CAPITAL AREA METROPOLITAN  
PLANNING ORGANIZATION  
CENTRAL TEXAS

**METRO**



### Agency Affiliates

**CTR** THE UNIVERSITY OF TEXAS AT AUSTIN  
CENTER FOR TRANSPORTATION RESEARCH

**Texas  
Department  
of Transportation**

**WILLIAMSON  
COUNTY**  
1848

