



> New Jersey

Advancing women
Advancing transportation

THE JERSEY CONNECTION

Issue Q2 2021

IN THIS ISSUE

- President's Message
- Event Recaps
- Save the Dates
- Membership Corner
- College Outreach Update
- Congratulations Leaders
- Founding Partners
- Corporate Sponsorship

WE ARE WTS!

PRESIDENT'S MESSAGE

WTS NJ is busy getting ready for the spring season!



Spring has sprung! We have already been busy cultivating new activities and new partnerships. We look forward to encouraging the new talent that will blossom with kick-off of our mentorship program as well as showcasing those in full bloom with events, scheduled for at least twice a month through June. Everyone has something to offer in terms of experience. Please let us (wtsnewjersey@gmail.com) know if you would like to share your knowledge during one of our mentoring program events.

Growth continues with the support of our Corporate Partners. Over 10 organizations and counting have committed the partnering with WTS NJ on the advancement of women in the industry. Chapter membership has blossomed to over 70 strong today. Throughout the remainder of our inaugural year, we will spotlight our partners that continue to uplift, starting with our Founding Corporate Partners.

In partnership with our neighboring chapters, we look forward to co-hosting several events. Starting on April 7th, where we started a four-part DBE Lunch & Learn series – DBE Toolkit, “Meet the Prime” (x2) sessions, and a Small Business Roundtable. On May 26th, in collaboration with National Society of Black Engineers (NSBE), WTS NJ hosted “The Road to Transportation; Is It Really the Road Less Traveled by Women?” On June 8th, there will be a Multi-State panel

with the women leading state transportation in New Jersey, New York, Delaware, and Pennsylvania – the Commissioners and Secretaries paving the way. Stay tuned for more to come - upcoming events schedules can be found at: Upcoming Events | WTS (wtsinternational.org)

What conversations will you tune in for?

- The difficult ones about gender diversity, systemic racism, Stopping Asian Hate.
- Topical talks about aviation, rail, freight, bridges, sustainability, active transportation, operations, finance, the Gateway.
- The challenging ones about self-promotion, work-life balance, transitioning positions or career.
- The ones without words involving a yoga class, meditation techniques or painting session.

This is your WTS NJ. We are listening.

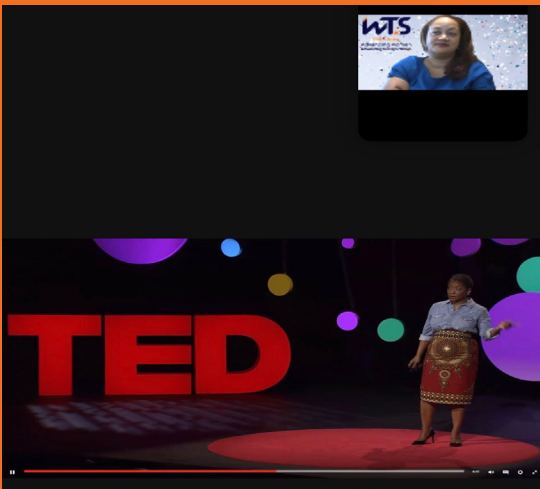
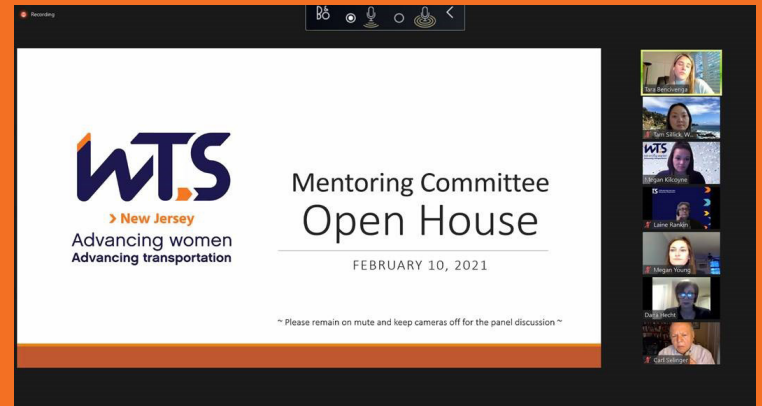
Thank you for connecting!

Zenobia L. Fields

GREAT EVENTS ARE HAPPENING VIRTUALLY OF COURSE!

WTS NJ Mentoring Open House

Our Mentorship Committee kicked off the 2021 class with their open house on February 10th. Through this program, select candidates were paired with Mentors from diverse career paths who will provide them with guidance and support as they navigate their careers. Our panelist discussion with industry leaders gave attendees the opportunity on how mentoring has helped shape their careers.



February TED Talk- Diversity & Inclusion in the Workplace

Janet Stovall helps organizations start and sustain true cultural change. Her no-nonsense approach and straightforward formulas of inclusion tackle corporate diversity issues head-on. Her work dismantles 'isms' to help organizations harness the true power of difference. As one of the few FORTUNE 500 speechwriters of color, Janet has worked with top executives from some of the world's biggest companies to translate subjective frustrations and fears about diversity into objective game plans and goals for inclusion. During this event, attendees had the opportunity to listen to Janet and discuss how diversity and inclusion takes place in their every day life. Does your organization have a multitude of diversity and inclusion?

Keep Middlesex Moving- Women in Transportation

WTS NJ joined Keep Middlesex Moving, a non-profit who provides commuter services - traffic, mass transit carpool, bicycle and pedestrian information for a sustainable community for a fantastic podcast. NJDOT Commissioner Diane Gutierrez-Scaccetti and Senior Policy & Program Advisor and WTS New Jersey President Zenobia Fields, discussed their paths to their current positions, their responsibilities and held a discussion and recommendations for those seeking a role in transportation.





**WELCOME
NEW MEMBERS!**
*as of 4/1/2021

Anuoluwa Adediji
Nancy Argueta
Tara Bencivenga
Sydney Chan
Winnie Chang
Andreia Chankalian
Sam Donelson
Jacqueline Garcia
Tahmina Hossain
Vichika Iragavarapu
Vanessa Jorge
Polina Knaster
Vanessa Lannaman

VIRTUAL EVENTS RECAP CONTINUED

March Membership Madness!

March Madness doesn't just mean basketball to WTS. The month also supports Women's History Month. In order to show support, WTS during the month of March, provided a 15% discount to any new annual membership or renewal. The NJ Chapter received a large increase of new members who took advantage of the Membership Drive with both New and Renewals broken down below:

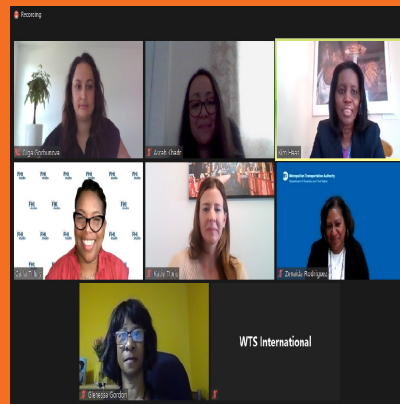


WTS benefits are invaluable, and we are excited to welcome our new members listed to the left! #weareWTSNJ

DBE Resources Series with WTS GNY

WTS NJ and GNY have joined forces for a four-session DBE Resources Series, each focusing on different resources for all who attended.

- *Session #1, DBE Toolbox* featured a panel discussion among representatives from local agencies, primes, and DBEs on the tools needed to successfully enter the government contracting market as a DBE.
- *Session #2, Meet the Primes* included a meet and greet panel discussion and breakout sessions with four Primes (AKRF, Cubic Transportation Systems, Hatch LTK, and WSP) where discussions took place on upcoming projects and to educate all about various selection processes.
- *Session #3, Small Business Roundtable* featured a discussion from representatives from various DBEs including FHI, AGES Inc., BRANO DESIGN, and OPAL TRAIL on the best practices for networking, seeking opportunities, financing, project management, organizational development and more!



**SAVE THE DATE
FOR SESSION #4
MEET THE PRIMES
JUNE 23, 2021**

Mark your Calendars!

We have exciting events to look forward to this summer. Mark your calendars!

JUNE

- 8th- GET TO WORK: The American Jobs Plan and Infrastructure Priorities for the Northeast
- 23rd- DBE Resources Series Session #4

EVENTS DATES TO BE ANNOUNCED!

JULY

- Wine Tasting Event- Tentatively Scheduled for July 15th

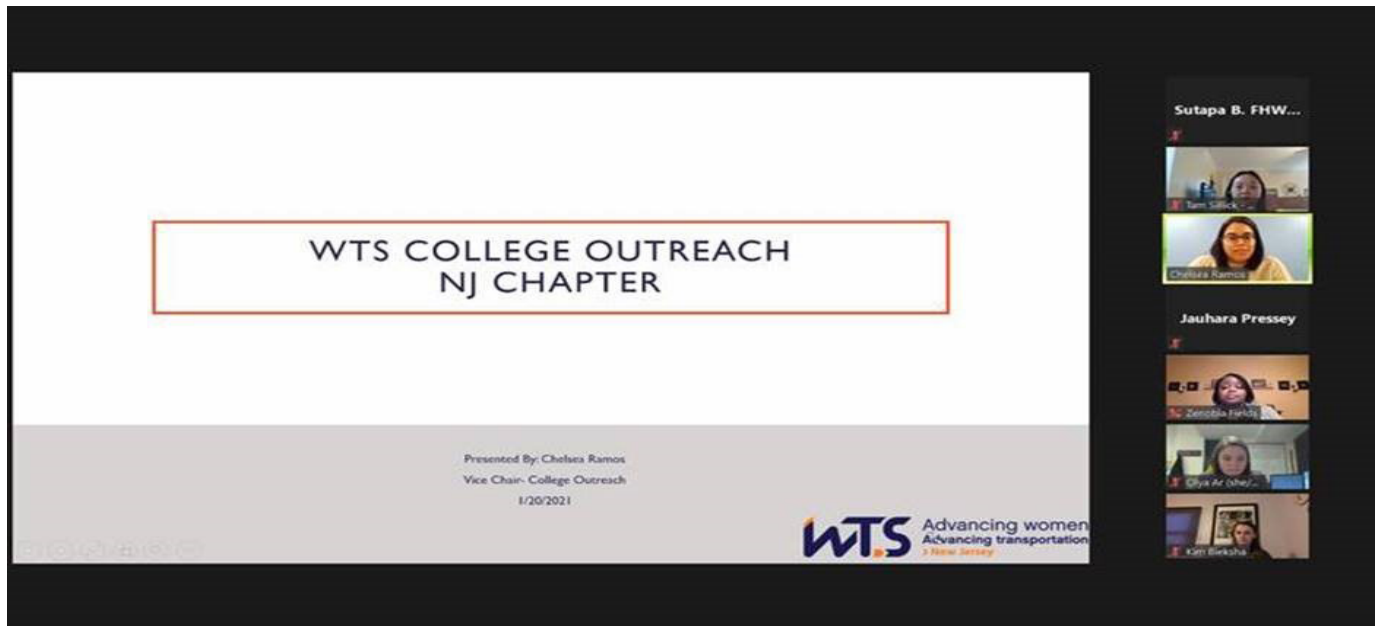
AUGUST

- Membership Yoga Event

NOVEMBER

- WTS NJ Inaugural Event





WTS NJ College Outreach Update

The College Outreach Committee hosted a kick-off event in January 2021 to initiate the college programs. Dozens of students participated from various colleges including (but not limited) to NJIT, Rutgers-Newark, University of Delaware, and TCNJ. A general overview of programming, events, and membership were presented to the students in addition to some fun and games. The College Committee also hosted a virtual event in February 2021 in which Jennifer Sneed, WTS member and public relations consultant, provided some critical tips and tricks on time management and professionalism within the workplace. The College Outreach Committee continues to plan engaging events such as an internship prep course and a virtual shadow day.

Congratulations to our following leaders!

Congratulations Sarah Steib!

Sarah, Project Consultant Discipline Manager, Bridge/Dams of French & Parrello Associates, one of our Directors at Large, was selected as Young Professional of the Year by ACEC NJ. Sarah will receive her award during the ACEC NJ Engineering Excellence Awards on July 14th. #weareWTS



Congratulations Chelsea Ramos!

Chelsea, Technical Specialist at NJ Transit and our Vice Chair for College Outreach as part of our Student Committee, is officially a "Master". She graduated with her Master's Degree in Environmental Science from NJIT. Way to go!



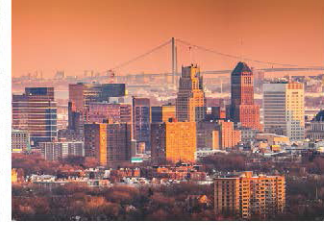
A SPECIAL THANK YOU TO OUR FOUNDING SPONSORS!



Make Amazing Happen

AECOM is honored to be a Founding Partner of the Women's Transportation Seminar (WTS), New Jersey Chapter. We are proud to support WTS and its dedication to the advancement of women in the transportation industry.

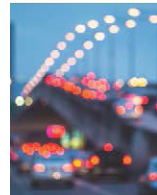
aecom.com



Advancing Our Client's Vision
IMPROVING OUR WORLD



French & Parrello Associates is proud to be a Founding Partner Sponsor for WTS New Jersey



WOULD YOU LIKE TO SEE YOUR COMPANY ADVERTISED IN THIS SPACE? BECOME A CORPORATE PARTNER!

We are excited to launch our Corporate Partners campaign for 2021! Click [here](#) for the application. If you need more information or are interested in becoming a member of our Corporate Partners Committee, please contact Kristen Ahlfeld (kahlfeld@fhstudio.com), Corporate Partners Committee Chair, to learn more. We look forward to hearing from you!

GET INVOLVED

**Question the ordinary
Imagine the extraordinary
Create the enduring**



Award-Winning Route 72 Manahawkin Bay Bridges, Ocean County, NJ
AASHTO America's Transportation Award Regional Winner & Top 12 National Finalist
ENR NY Best Of Merit Award
ACEC NJ Honor Award

**WSP is proud to be a Founding Partner
of the new WTS NJ Chapter.**

*Clients partner with WSP to mobilize communities
from coast to coast.*

Find out what we can do for you.



wsp.com/usa

Join our team!



A SPECIAL THANK YOU TO OUR DBE FOUNDING SPONSORS!



American Geotechnical & Environmental Services, Inc.

We are one of the largest specialty geotechnical engineering design firms in the Northeast United States.

We are proud to celebrate our 26th Anniversary. Our wonderful journey would not have been possible without our exceptional employees and clients. We want to thank you for being a part of our family and are looking forward to many more years working together.



Certified DBE in NJ, PA, OH, WV, DE, DC & VA.

www.agesinc.com



Engage | Design | Advance



fhistudio.com

FHI Studio is proud to be a DBE Founding Partner of WTS New Jersey

Environmental Documentation | Mobility & Land Use | Community Engagement



Malick & Scherer, P.C.

Consulting Engineers
Construction Inspectors
Environmental Scientists
Land Surveyors

Services Provided:

- ◆ Roadway
- ◆ Traffic Engineering
- ◆ Structural Design
- ◆ Drainage Design/H&H
- ◆ Civil/Site Engineering
- ◆ Utility Coordination and Design
- ◆ Environmental Services
- ◆ CM/CI
- ◆ Survey/Base mapping
- ◆ ROW



Founded in 1998 | Certified DBE/MBE/SBE
Offices in Hampton, NJ | Philadelphia, PA | New York, NY
www.malickandscherer.com | (908) 537-1300

Serving the Infrastructure Industry for over 22 years

WELCOME TO THE TRAIL...

OPAL TRAIL LLC

A Company Built on Transformation

DBE/SBE SPECIALIZING IN ENVIRONMENTAL SERVICES



VISIT US:
OPALTRAIL.COM

CALL US:
(201) 580-6862

EMAIL US:
INFO@OPALTRAIL.COM

CORPORATE SPONSORS

We thank all of our steadfast Corporate Sponsors.

The generous donations of our Corporate Sponsors contribute to the success of our chapter's endeavors. Some of the benefits of sponsorship include recognition during our various events throughout the year, attendance at members-only events, recognition on our website and a hyperlink to the firm's website, and a complimentary annual membership for an employee of the firm.

If you would like to become a Corporate Sponsor and share in the many benefits of sponsorship, please contact **Kristen Ahlfeld**, Corporate Sponsorship Chair.

FOUNDING PARTNERS



DBE FOUNDING PARTNERS



GOLD PARTNERS



SILVER PARTNER

