

**LAWA**  
LOS ANGELES WORLD AIRPORTS

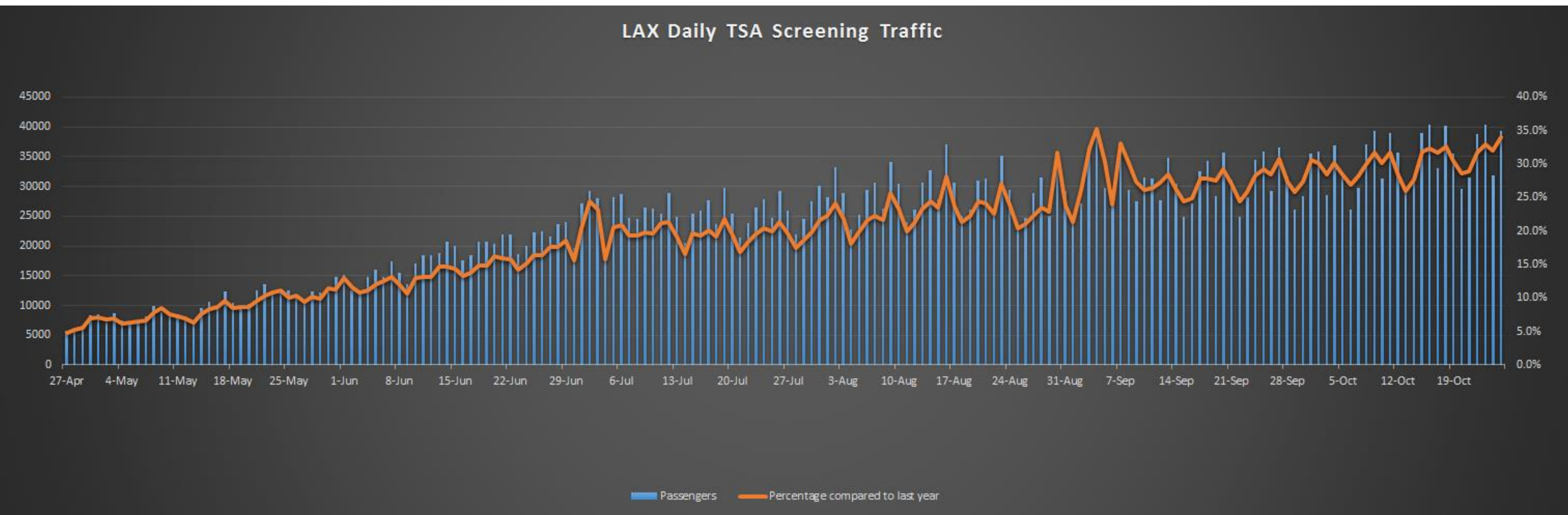
**LAX**

**VNY**

# WTS-LA Aviation Program

October 29, 2020

# Passenger Numbers





# Travel Safely at LAX

## Airport Cleanliness

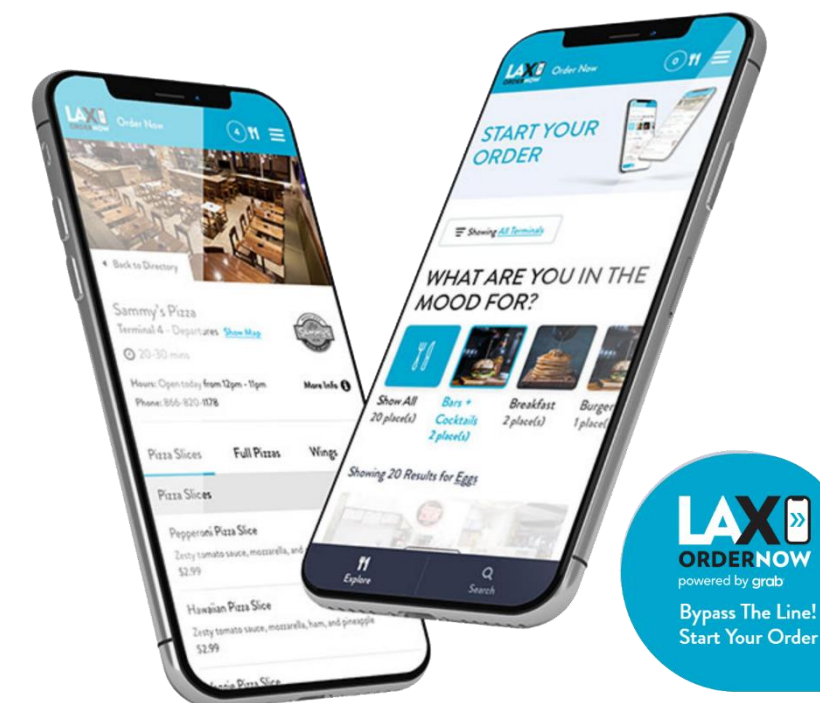
- Frequent cleaning of high-touch areas
- Electrostatic spray units
- 250+ hand sanitizer stations and SmartCarte disinfectant wipe stations
- UV and ionized air filtration
- UV sanitization of escalator handrails

## Touchless Technology

- LAX Order Now
- Virtual assistance information desks
- Touchless faucets & drinking fountains
- Contactless TSA ID screening & touchless airline check-in kiosks
- Facial recognition at Global Entry kiosks & Simplified Arrival
- Tom Bradley International common bag drop

## Terminal Wellness Pilot Project

- Thermal scanning cameras at Tom Bradley International Terminal entrance helped create an “island of wellness”





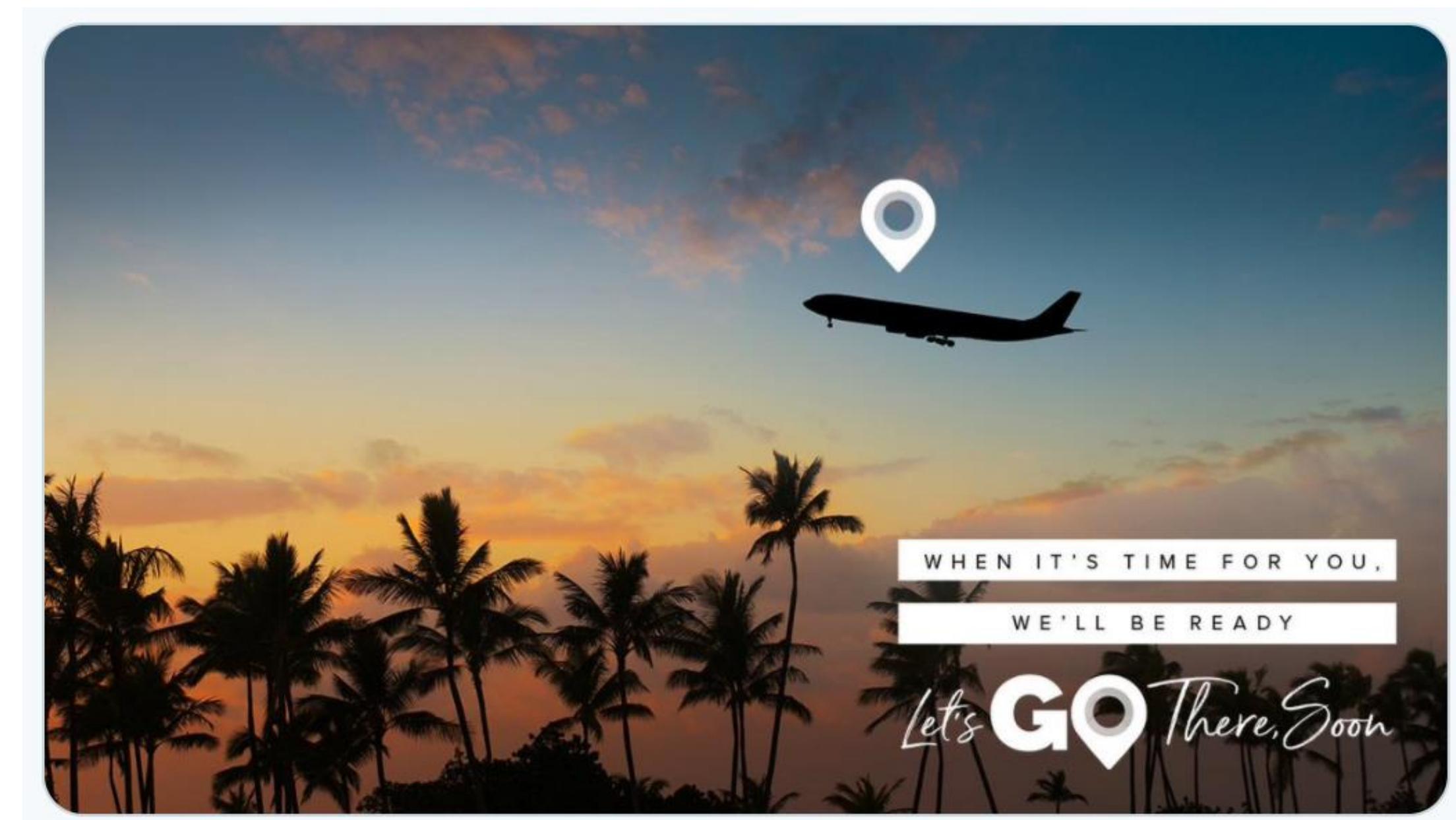
# Innovative Measures to Stimulate Travel

## AirBridge

- Reciprocal agreement between two specific airports
- Goal is to open up borders that are currently closed or eliminate/reduce quarantines that are currently in place
- Unified industry support for a common/consistent model

## Rapid COVID-19 Testing Pilot On-Site

- Plan to open before Thanksgiving





# Building the Future of LAX

## Landside Access Modernization Program (LAMP)

- Automated People Mover
- Consolidated Rent-A-Car facility
- Intermodal Transportation Facility-West

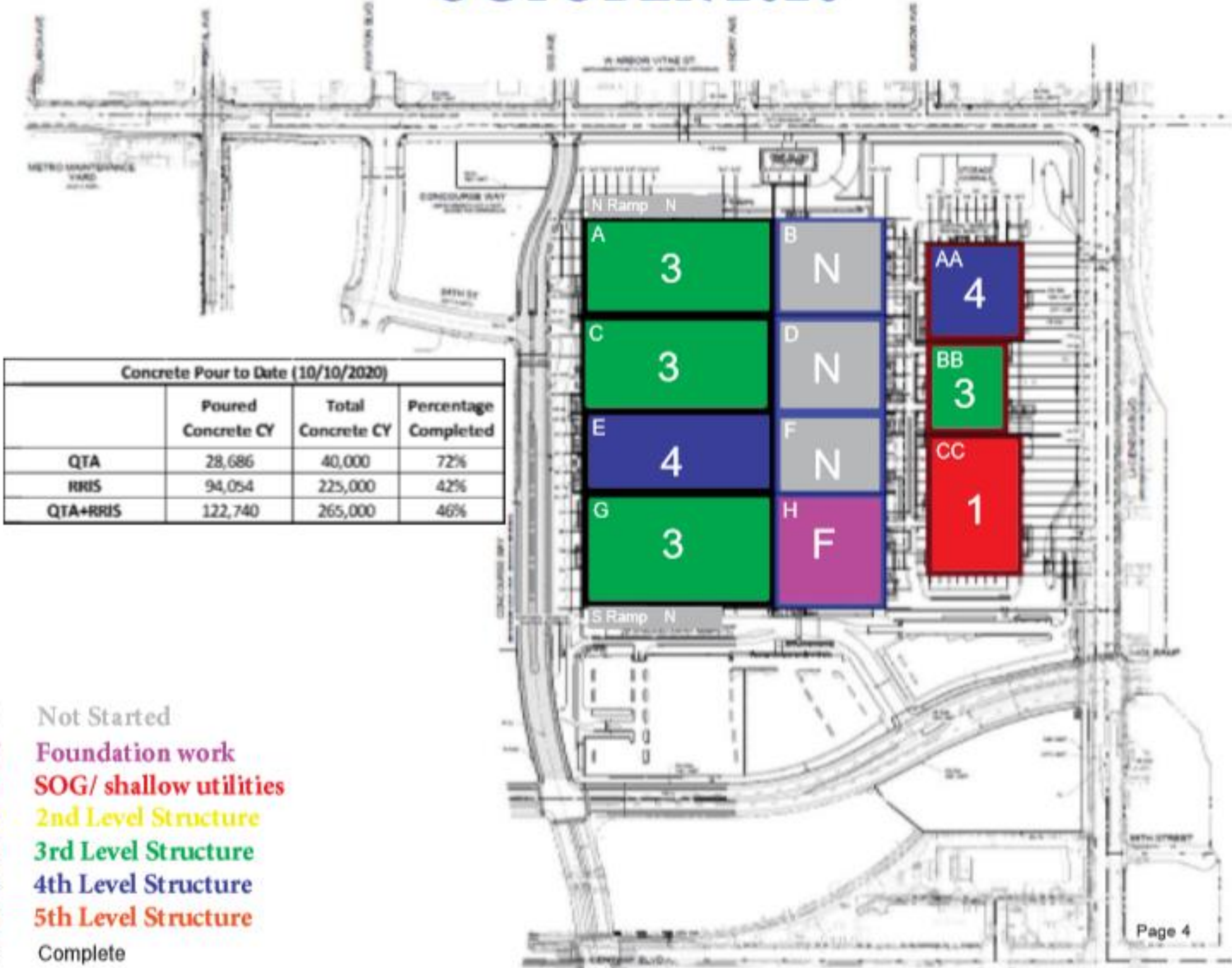




# Building the Future of LAX

ConRAC Structural Progress based on  
September Schedule Update

OCTOBER 2020





# Building the Future of LAX

## Midfield Satellite Concourse

- 12-gate concourse connected to Tom Bradley International opening next year

## Airport Police Facility

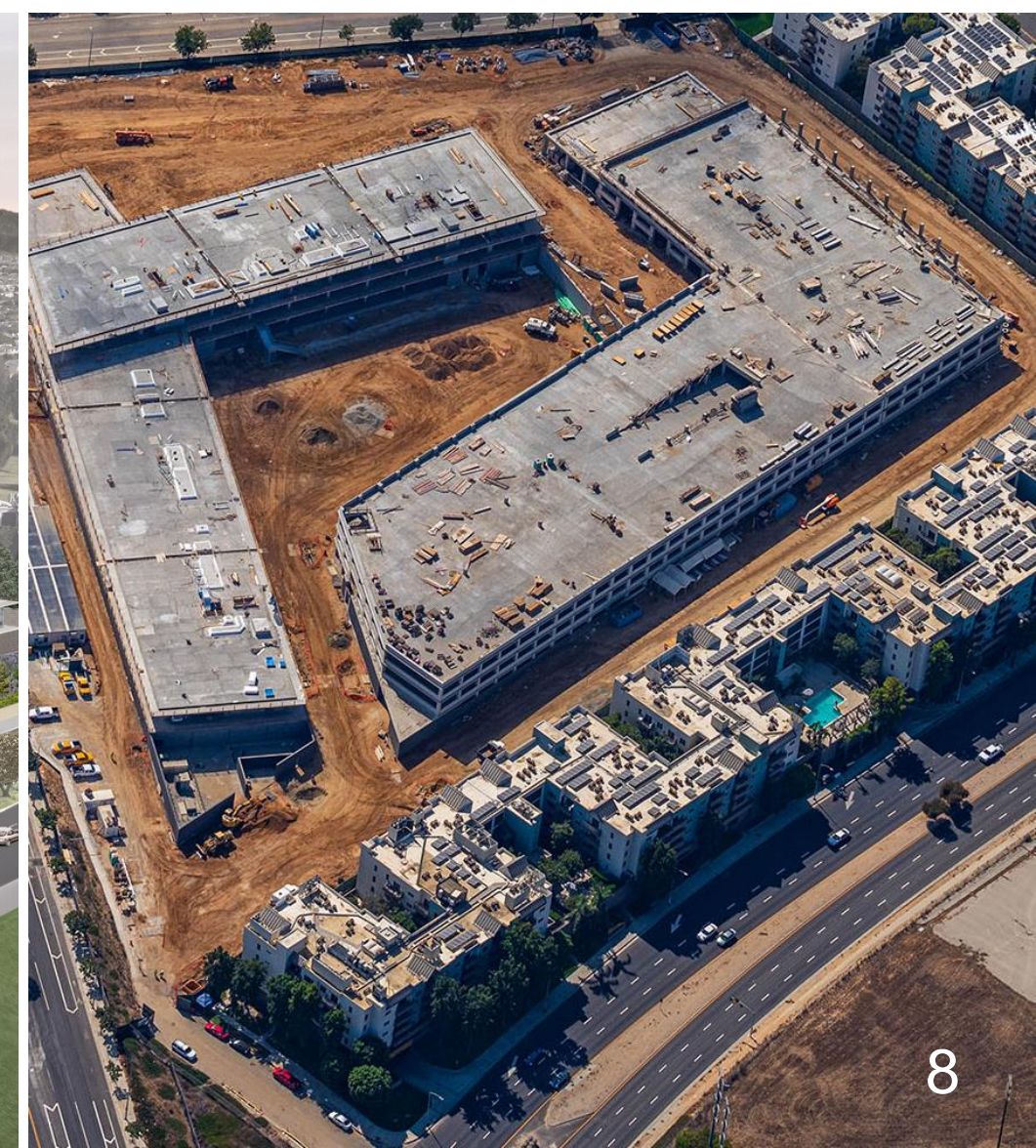
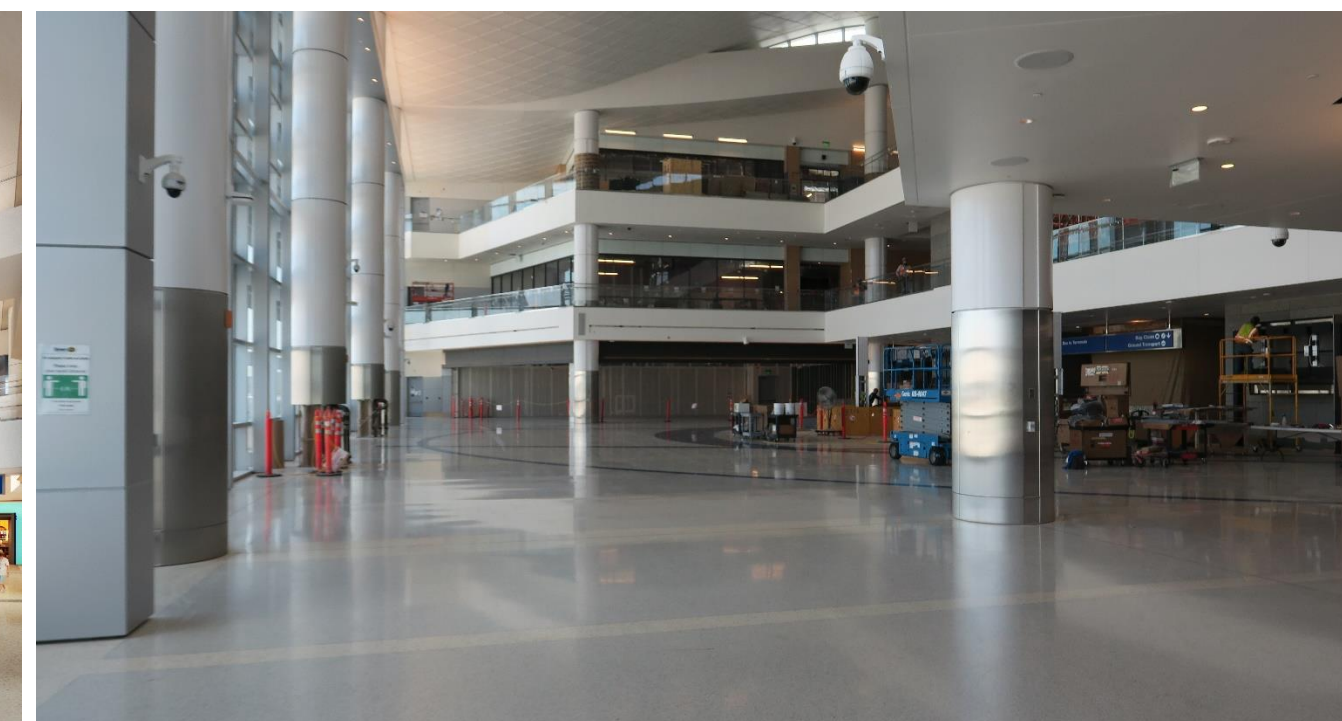
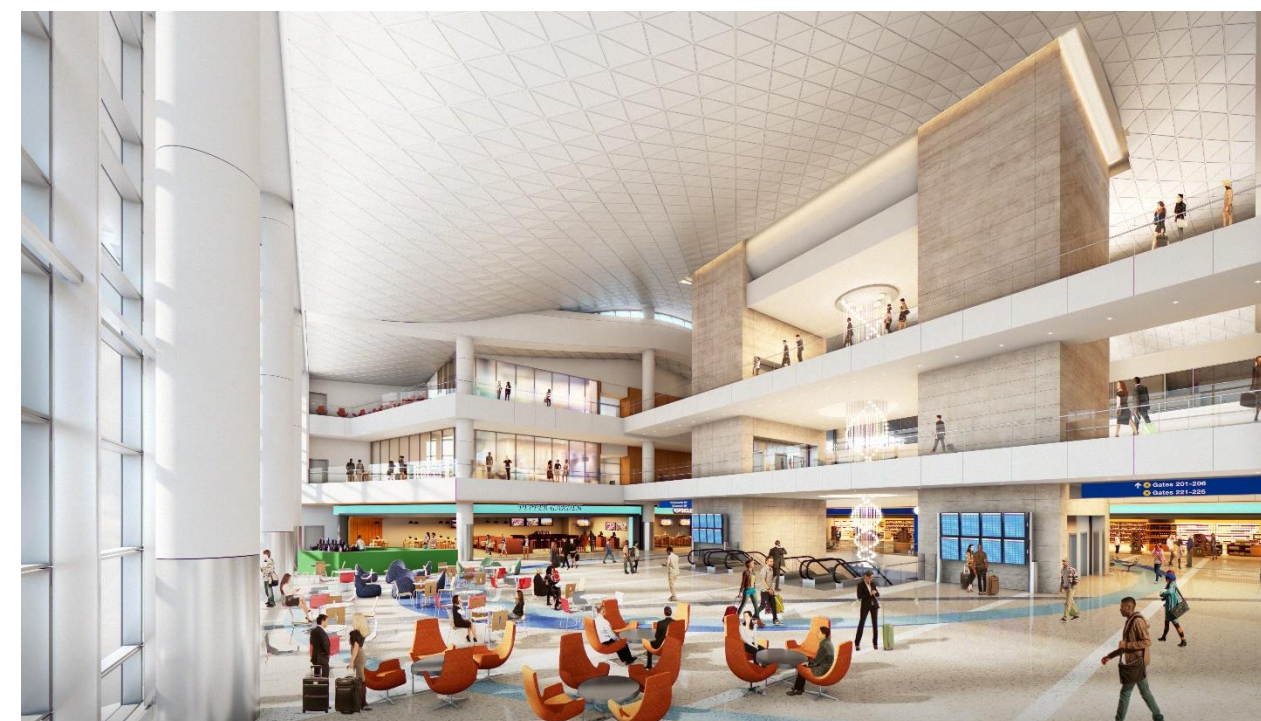
- State-of-the-art facility opening in fall 2021

## Airfield & Terminal Modernization Project

- Concourse 0, Terminal 9, taxiway improvements, roadway improvements
- Draft EIR to be released in November

## Northside Development

- Finalizing RFP by end of 2020





# Living our Values

## Sustainability

- LAWA Sustainability Action Plan, “Boldly Moving to Zero”
- Zero carbon emissions, zero potable water usage and 100% renewable energy by 2045
- Electric bus fleet now on site
- Recycling construction/demolition waste (85% in 2019)

## Equity

- Disparity study
- Racial Equity Core Team
- Women’s Association

## Inclusivity

- New Inclusivity Scoring Policy
- LAWA is leading the way on contracting requirements to include local hire and XBE





# Thank you!

Email: [mschwartz@lawa.org](mailto:mschwartz@lawa.org)

**LAX**