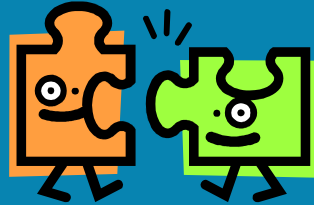




Advancing Women in Transportation
Tucson Chapter

presents



The Generation Puzzle

How Each Generation Fits into the Work Landscape

Ever find yourself feeling like you're working with a person from another culture? If they're of a different generation, you are.

Each generational "cohort" (Traditionalists, Boomers, Generation X's, and Millennials), was shaped by the prevailing values, events, crises and attitudes during their formative years.

Each "cohort" has its own symbols, dress, mannerisms, values, method of communicating, and definition of success. These differences can create tension and conflict in the work environment.

With understanding and training, you can diffuse the drama, and breakthrough the barriers to become a well-oiled, functional team.

During this interactive training you will begin the learning journey to:

- Identify our generational differences
- Gain an appreciation for each generation's idiosyncrasies
- Identify their focus and what motivates/demotivates them
- Improve your hiring, retention, and management of the various generations
- Have fun enjoying all our cultural diversity in the workplace

About Our Trainer

Sue Porter, also known as "*The Accidental Leader*," is an Executive Coach and Business Consultant. She has been providing training to companies for over 30 years, living out her passion to assist people and businesses to grow and mature to reach their full potential. **For more information, see www.AccidentalLeader.com.**

Join us for this professional development seminar!

DATE: November 12

REGISTRATION: Promptly at 11 a.m.

PROGRAM BEGINS: 11:30 a.m.

BUFFET LUNCH: 12:15 p.m.

PROGRAM CONTINUES: 12:45 p.m. -1:30 p.m.

LOCATION: Manning House, 450 W. Paseo Redondo, Tucson

COST: \$25 Members
\$30 Nonmembers

RSVP: wtstucson@aol.com or Melissa Antol at 837-6693 or
Melissa.Antol@tucsonaz.gov