



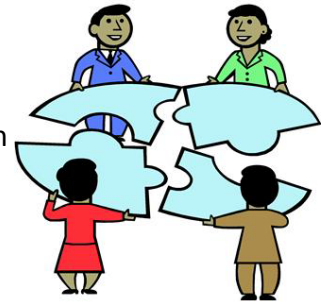
Puget Sound Chapter

Collaborative Decisions:

Making the Most of Your Time with Stakeholders

A presentation and discussion with Martha and Jeff Bean

In the field of transportation, you undoubtedly find yourself guiding groups through tough discussions, explaining complex technical information to laypeople, and refereeing conflicts over dueling mandates. In this lunchtime session, the sister and brother team of Martha and Jeff Bean will give you some tools and perspectives you can use to:



-Be efficient and wise regarding the stakeholders who 'sit at the table' for transportation decisions-

So you can be strategic and fair

-Learn the interests, concerns and ideas behind stakeholder positions-

So you can build agreement and improve your project

-Understand why issues that seem straightforward, or ideal for collaboration, nonetheless end up in court-

So you can help guide decisions to their best forum.

Our lunchtime speakers have, between them, four+ decades of experience helping people and organizations productively engage for results on complex and controversial topics. We encourage you to visit their respective websites at www.collaborativefocus.com and www.beyondthecourthouse.com. Martha and Jeff look forward to their time with you on August 10.

AICP Continuing Maintenance Credit for 1 Hour is pending.

Where: Sound Transit Ruth Fisher Board Room (Union Station)
401 S. Jackson St. Seattle, WA

When: Tuesday, August 10, 11:30 a.m. to 1:00 p.m.

Cost: \$25 (\$26.99 with Brown Paper Tickets service fee)
Includes box lunch by Gourmandos. (email Jennica (contact below) if you'd like a vegetarian lunch)

Please RSVP by purchasing your ticket through Brown Paper Tickets *no later than Friday August 6*. Visit www.brownpapertickets.com/event/121172 to register.

Contact Jennica Ottenbreit, 206-382-5218, Ottenbreit@pbworld.com with any questions.

For more information about WTS, please visit our website at www.wtsinternational.org/Chapters.aspx?id=7208